

# **Appropriations**

**State Tax Funds for  
Operating Expenses of  
Higher Education**

**1989-1990**

**Edward R. Hines**



**National Association of State Universities  
and Land-Grant Colleges**

# STATE SUPPORT OF HIGHER EDUCATION: A RETROSPECTIVE OF FY1990

## Introduction and Purpose

This annual report of state tax appropriations for the operating expenses of higher education in the 50 states continues the "longitudinal study of state tax support of higher education in the United States," begun by M. M. Chubb in 1959. In 1990, The National Association of State Universities and Land-Grant Colleges published the first volume of *Appropriations of State Tax Funds for Operating Expenses of Higher Education*. These state tax appropriations data are presented in three slightly different forms during the year. After they are collected from a network of "correspondents" in the 50 states, the data are published as soon as possible in an issue of *Surveying*, the monthly research report published by the Center for Higher Education at Illinois State University. Second, they appear in somewhat abbreviated form in an October issue of *The Chronicle of Higher Education*. Third, shortly after the beginning of the calendar year, they are published in comprehensive form by the National Association of State Universities and Land-Grant Colleges.

**What the Figures Are Intended to Mean (Page 12)** - The reader's attention is directed to the explanatory page which precedes the tables. Tables included in, as well as excluded from, the report are listed. The data are presented in the corresponding tables in an effort to provide a comprehensive picture of state tax support of higher education. These data reflect total state tax support of higher education in the 50 states. Appropriations data are then presented in the tables.

## APPROPRIATIONS OF STATE TAX FUNDS FOR OPERATING EXPENSES OF HIGHER EDUCATION

1989-90

Edward R. Hines  
Center for Higher Education  
Department of Educational Administration and Foundations  
Illinois State University  
Normal, IL 61761  
(309) 438-5405

The state legislatures are comprehensive in that they include institutional figures as well as statewide totals. Each state table includes two columns of figures: those for the current fiscal year and those for the preceding fiscal year. In recent years, about one-half or more of the state correspondents have updated their initial *Surveying* reports. In some states the revisions are made by legislatures and in others they result from gubernatorial decisions. The revisions are included so that these data may be as accurate as possible.

Published by  
The National Association of State Universities  
and Land-Grant Colleges

Monoclonal antibodies are used in a variety of ways in the laboratory. They are used to identify and quantify specific proteins, to detect the presence of specific antigens, and to study the function of specific genes. They are also used in the diagnosis and treatment of disease. The use of monoclonal antibodies in the laboratory is a rapidly growing field, and it is expected that their use will continue to increase in the future.

For additional copies of this report:

National Association of State Universities  
and Land-Grant Colleges  
Office of Communications Services  
One Dupont Circle, N. W.  
Suite 710  
Washington, DC 20036  
(202) 778-0818

Microcomputer disks of the appropriations data are available from the Center for Higher Education, 331 DeGarmo Hall, Illinois State University, Normal, IL 61761. The data are in tabular form for each state for each fiscal year since FY1980 to FY1990, inclusive. The software program used is LOTUS 1-2-3, release 2.01. Price: \$25.00 (prepayment preferred). For more information in this regard, please telephone Gwen Pruyne (309) 438-5405.



## STATE SUPPORT OF HIGHER EDUCATION: A RETROSPECTIVE OF FY1990

### Introduction and Purpose

This annual report of state tax appropriations for the operating expenses of higher education in the 50 states continues the "longitudinal study of state tax support of higher education in the United States," begun by M. M. Chambers in 1958. In 1960, The National Association of State Universities and Land-Grant Colleges published the first volume of Appropriations of State Tax Funds for Operating Expenses of Higher Education. These state tax appropriations data are published in three slightly different forms during the year. After they are collected from a network of "correspondents" in the 50 states, the data are published as soon as possible in an issue of Grapevine, the monthly research report published by the Center for Higher Education at Illinois State University. Second, they appear in somewhat abbreviated form in an October issue of The Chronicle of Higher Education. Third, shortly after the beginning of the calendar year, they are published in comprehensive form by the National Association of State Universities and Land-Grant Colleges.

What the Figures Are Intended to Mean (Page 12) The reader's attention is directed to this explanatory page which outlines which data which are included in, as well as excluded from, Grapevine. These guidelines are used by the Grapevine correspondents in an effort to achieve greater consistency between states and over time. These data reflect total state tax effort for higher education. The major features of these appropriations data are their timeliness, accuracy and comprehensiveness.

The reports are the most timely available because they initially are published as soon as possible after legislative decisions are made. There are other studies of state support of higher education which are available later in the year. The reader is advised to consult these sources which, in addition to state tax appropriations, include student tuition, local taxes, and related information. These sources include the National Comparison of Financial Support for Higher Education, prepared by Jackie Johnson of the Higher Education Coordinating Board in the State of Washington, and State Profiles: Financing Public Higher Education by Kent Halstead of Research Associates, 2605 Klingle Road, N.W., Washington, DC 20008. At a later time, a complete compilation of finance data is available in State Higher Education Profiles, published by the Center for Education Statistics, U.S. Department of Education, Washington, DC.

The state tabulations are comprehensive in that they include institutional figures as well as statewide totals. Each state table includes two columns of figures: those for the current fiscal year and those for the preceding fiscal year. In recent years, about one-half or more of the state correspondents have updated their initial Grapevine reports. In some states the revisions are made by legislatures and in others they result from gubernatorial decisions. The revisions are included so that these data may be as accurate as possible.

### Analysis of Trends in State Support for Higher Education

There are three prominent characteristics of state tax appropriations for higher education for FY1990. First, over \$39.3 billion were appropriated for higher education in the 50 states. Second, this amount represented the largest dollar gain (\$2.7 billion) over the preceding year in a full decade. Third, the 7.5% one-year gain from FY1989 to FY1990 was larger than the one-year percentage gains in five of the previous seven years. The national two-year percentage gain of 14.3 in FY1990 was larger than that in four of the preceding six years.

Table 1

## STATE HIGHER EDUCATION SUPPORT DURING THE 1980s

Fiscal Years	1980	1981	1982	1983	1984	1985	1986	1987	1988	1989	1990
Billions of Dollars	19.2	20.9	23.1	24.4	25.9	28.4	30.7	32.2	34.4	36.6	39.3
1-Yr Gain (\$billions)	2.1	1.7	2.2	1.3	1.5	2.5	2.3	1.5	2.2	2.2	2.7
1-Yr Gain (Percent)	12.1	9.6	10.1	5.6	5.9	9.7	8.0	4.8	6.8	6.3	7.5
2-yr Gain (Percent)	24.3	22.9	20.7	16.3	11.8	16.2	18.8	13.1	12.0	13.5	14.3

**Nationwide Gains** Table 1 presents a statistical view and Figure 1 (page 7) presents a graphic view of the decade of the 1980s, according to the annual dollar gains and percentage gains in state tax support for higher education. During this decade, the magnitude of state tax support for higher education more than doubled from \$19.2 billion to \$39.3 billion. There were one-year dollar gains of less than \$2.0 billion in four of the years, with the low of \$1.3 billion reported in 1983. There were gains of more than \$2.0 billion in seven years, and the high of \$2.7 billion occurred this year (FY1990). In one-year percentage gains for the decade, the lowest gain of 4.8% was reported in 1987, there were four years when one-year gains were over 9%; and, in FY1990, there was an 7.5% gain. In two-year percentage gains for the decade, the low point (lower than 12%) was reported in 1984. For FY1990, the two-year gain of 14.3% was higher than was reported in four years during the 1980s.

**Recent Trends in Two-year Gains** Table 2 displays three groupings of states: those which had increasing two-year percentage gains from FY1989 to FY1990, those which had decreasing two-year percentage gains from FY1989 to FY1990, and those which reported identical two-year percentage gains in the two years. This year, there were 31 states in the first group; 15 states in the second group; and four states with identical two-year percentage gains in the two years. As a comparison, in FY1989, there were 26 states with increasing two-year gains, and 20 states with decreasing gains between FY1988 and FY1989. Two years ago, only 17 states reported increasing two-year gains, and 28 states reported decreasing two-year gains between FY1987 and FY1988. The evidence supports the observation that there was stronger state support for higher education this year than there was in the recent past.

Notes: The data in the tables and on the map are as of November 1, 1989. Revisions received after that date will appear in next year's edition of this publication.

Table 2

31 States with Increasing Two-Year Gains			15 States with Decreasing Two-Year Gains		
States	FY89 (%)	FY90 (%)	States	FY89 (%)	FY90 (%)
Alaska	-20	6	Alabama	23	16
California	11	13	Arizona	21	14
Colorado	12	14	Arkansas	15	6
Delaware	11	14	Connecticut	24	12
Georgia	14	16	Idaho	15	14
Illinois	1	26	Iowa	19	14
Indiana	14	16	Kentucky	13	11
Kansas	19	23	Maine	29	25
Louisiana	-3	6	Massachusetts	6	-9
Maryland	23	34	Michigan	10	8
Minnesota	10	16	Mississippi	30	20
Missouri	16	20	New Hampshire	29	11
Nebraska	18	27	New Jersey	26	12
Nevada	18	30	Rhode Island	18	13
New Mexico	10	13	Utah	7	6
New York	10	11			
North Carolina	13	14			
North Dakota	-4	21			
Ohio	9	13			
Oklahoma	8	15			
Oregon	8	13			
Pennsylvania	15	16			
South Carolina	15	18			
South Dakota	9	17			
Tennessee	11	14			
Texas	14	18			
Vermont	17	20			
Virginia	14	21			
Washington	14	17			
West Virginia	5	6			
Wisconsin	11	13			

4 States with Identical Two-Year Gains		
	FY89 (%)	FY90 (%)
Florida	15	15
Hawaii	20	20
Montana	4	4
Wyoming	4	4



Of the 31 states reporting increasing two-year gains from FY1989 to FY1990, three had gains of 25 points or more (Alaska, Illinois and North Dakota), and two others (Maryland and Nevada) had gains of 11 and 12, respectively. The remainder had changes in gains of less than 10 points, but in this group there were three states going from negative percentages in FY1989 to positive percentages in FY1990. Among the 15 states with decreasing two-year gains, only four had decreases greater than 10 points (Massachusetts, Connecticut, New Hampshire and New Jersey) and seven states decreased five or less points from FY1989 to FY1990. Four states reported identical percentage gains from FY1989 to FY1990: Florida (14.7%, rounded to 15%) was slightly above the national weighted average of 14.3%, Hawaii exceeded the national average at 20%, and Montana (4%) and Wyoming (4%) were below the national average.

**The Megastates** There are eleven, heavily-populated states having large higher education systems with numerous campuses and relatively large enrollments. Each megastate annually appropriates more than one billion dollars for higher education. Interestingly, these 11 megastates were distributed fairly evenly across the four quartile groupings of states, ranked on two-year percentage gains. There were two megastates in the highest quartile: Illinois led with a 25% two-year gain, followed by Virginia at 21%. Three states appeared in the second quartile: Texas had an 18% gain; Pennsylvania, 16%; and Florida, 15%. There were four states in the third quartile: North Carolina, 14%; Ohio, 13%; California, 13%; and New Jersey, 12%. Two megastates appeared in the fourth or lowest quartile: New York, 11%; and Michigan, 8%.

**A Regional View of FY1990** Table 3 arranges the 50 states according to geographic quadrants and quartiles, using a rank order of two-year percentage gains. Geographic quadrants were formed by dividing the United States into four relatively even regions by locating a "centerpoint" at the northeast corner of Missouri. The Mississippi River divides East from West, the Ohio River and the southern border of Pennsylvania divide Northeast from Southeast, Alaska is placed with the Northwest, and Hawaii is placed with the Southwest. The Northeast has 14 states; the Southeast has 12, the Northwest has 11, and the Southwest has 13 states. The quartile grouping, based upon two-year percentage gains, is slightly different in size each year due to "natural breaks" in the range of percentages. This year, there were 12 states in the highest quartile; 11 states in the second highest quartile; 15 states in the third; and 12 states in the fourth or lowest.

Table 3

The highest quartile of 12 states ranges from two states reporting two-year gains at or above 30% (Maryland, 34%; Nevada, 30%) to six states with two-year gains between 27% and 21%; to a cluster of four states around 20%. In the second quartile: four states converged around 17% to 18%, five at 16%, and two at 15%. In the third quartile: seven were at the national average of 14%, six at 13%, and two at 12%. In the lowest quartile, there were three at 11%, eight under 9%, and only one state reported a negative percentage, Massachusetts at -9%.

Quadrants	NW*	SW**	NE	SE	Totals
Highest	2	4	3	3	12
Second	3	2	2	4	11
Third	3	4	5	3	15
Lowest	3	3	4	2	12
Totals	11	13	14	12	50

\* Includes Alaska    \*\* Includes Hawaii

Combined with the map showing two-year percentage gains, Table 3 helps identify a pattern for FY1990 characterized by a less favorable performance by states in the Northeast, and improved performance by states in both the Northwest and Southwest. Last year (FY1989), there were five Northeastern states in the top quartile and only two Northeastern states in the bottom quartile. This year, there were three Northeastern states in the top quartile, and four in the bottom quartile. There were nearly the same number of states in the two middle quartiles in the two years. In the two quadrants west of the Mississippi River, there were six states in the top quartile this year, compared with five states last year. However, there were only six states in the West appearing the lowest quartile this year, compared with 11 states last year. In the middle two quadrants, there were 12 western states this year and eight states last year.

### Regional and Revenue Variations among the States

It is easy to make too much of regional patterns in state higher education support. Regions are convenient to identify and observations about regional variations seem to be apparent. Usually, on closer examination, regions exhibit as many exceptions as commonalities.

Nonetheless, one year ago, it was observed that "FY1987 and FY1988 were characterized by clear economic resurgence in New England, a strong performance of coastal states, and severe economic difficulties in the Southcentral and Northern Plains regions." Comparatively, two of the New England states appeared in the top quartile this year (Maine and Vermont), and the four remaining New England states were either in the bottom quartile (Massachusetts, New Hampshire) or near the bottom quartile (Connecticut and Rhode Island). Also, at or near the bottom quartile were New York and New Jersey. The remaining East Coast states were at or above the weighted national average percentage gain of 14% (North Carolina and Delaware were at 14%). On the West Coast, including Hawaii, two of the states were above the national average and the other two were only one point below the national average. The "severe economic difficulties" in the country's midsection one year ago gave way to Illinois, Missouri, Kansas, Nebraska and North Dakota rising to the top quartile. In the Southcentral region, both Louisiana and Arkansas remained in the bottom quartile where they were in FY1989, while Oklahoma nearly doubled its gain from 8% to 15%.

In summary, it appears that in FY1990, the Northeast (specifically New England) was unable to continue the economic resurgence which was strong in the early 1980s. There appears to be a resumption of higher education support in the middle of the nation, and a "balanced" showing of the megastates. While in FY1988, eight states had negative two-year percentage "gains," and in FY1989, there were three states with negative percentages, in FY1990, only one state was in that category.

State Revenue Capacity Of the numerous variables affecting the extent to which a state is able to support higher education, none are more important than revenue capacity and "lawmaker willingness." Without the availability of revenue, a state is unable to support state services because deficit spending is not an option. In an age when there is keen competition for available state dollars, revenue capacity does not mean automatic increases. Therefore, lawmakers--both governors and state legislators--must be willing to make the necessary appropriations for the support of higher education. To this end, the amount and effectiveness of the way in which colleges and universities represent themselves in state capitals, lobbying if you will, has increased markedly during the 1980s.



Table 4

TOP TEN TWO-YEAR GAINERS				BOTTOM TEN TWO-YEAR GAINERS			
States	General Fund Increase <sup>1</sup>	State Approp Increase <sup>1</sup>	Higher Education Increase <sup>2</sup>	States	General Fund Increase <sup>1</sup>	State Approp Increase <sup>1</sup>	Higher Education Increase <sup>2</sup>
	1-year %	1-year %	2-year %		1-year %	1-year %	2-year %
(1)	(2)	(3)	(4)	(5)	(6)	(7)	(8)
Maryland	5.7	11.0	33.9	New York	7.8	4.3	10.7
Nevada	14.2	5.5	30.2	Michigan	2.4	4.9	8.4
Nebraska	- 1.0	18.7	27.4	Alaska	4.5	- 4.3	6.3
Illinois	2.4	9.8	25.8	West Virginia	12.0	14.3	5.9
Maine	6.6	9.6	25.0	Arkansas	2.1	2.1	5.9
Kansas	2.2	11.3	23.1	Utah	3.4	- 0.5	5.8
Virginia	11.1	9.3	20.9	Louisiana	(Not available)		5.6
North Dakota	4.5	8.3	20.9	Wyoming	- 1.4	0.0	4.3
Hawaii	(Not available)		20.2	Montana	1.7	11.9	4.1
Mississippi	4.0	5.8	20.2	Massachusetts	5.1	- 2.0	- 8.8
Mean in FY90	5.7	10.4	25.3	Mean in FY90	4.2	3.4	4.8
Mean in FY89	7.3	9.1	25.2	Mean in FY89	- 0.3	1.5	0.2
Mean in FY88	7.2	7.7	23.0	Mean in FY88	5.1	0.8	- 5.3
Mean in FY87	5.6		26.1	Mean in FY87	- 2.1		- 0.4

Sources: <sup>1</sup>Martha A. Fabricius, Steven D. Gold and Corina L. Eckl, State Budget Actions in 1989 (preliminary). August 10, 1989. Denver, CO: National Conference of State Legislatures.  
<sup>2</sup>Grapevine.

Each year, the National Conference of State Legislatures (NCSL) conducts a summer survey of legislative fiscal officers and publishes a report entitled State Budget Actions in (year). Data from this NCSL survey are included in Table 4. The column labeled "general fund increase" is based on the projected growth rates of a state's general fund revenues from FY1989 to FY1990, as reported by NCSL. This revenue variable represents a state's fiscal capacity to support higher education. "Lawmaker willingness" is represented in proxy form in the column labeled "state appropriations increase" and is an estimate by legislative fiscal officers of the extent of growth in state appropriations from FY1989 to FY1990. In a sense, therefore, the revenue column provides an answer to the question, "To what extent did states have revenue capacity?" The appropriations column provides one answer to the question, "Were states willing to appropriate available revenue to public services?" Finally, the remaining column in Table 4 which is labeled "higher education increase" is based on data reported in Grapevine, representing the actual effort for higher education made by the state over a two-year period.

Comparing the top ten and bottom ten states in two-year percentage gains, as shown in Table 4, those states appropriating relatively more for higher education had the revenue capacity to fund state services, in general. On the other hand, the ten states with the lowest two-year percentage gains in appropriations for higher education did not have as much revenue capacity and were not able to make as much effort in appropriations increases, generally.

In Table 4, the mean values from the top and bottom groupings of states are included for FY1987, FY1988, and FY1989. Comparing these means between the top and bottom groupings of states for these other years with the means for FY1990, it appears that states had relatively less revenue capacity in FY1990 than they had in FY1988 and in FY1989. In addition, it appears that states made a proportionately greater effort for supporting services in general, as indicated by the 10.4% percentage



increase in state appropriations, than they did in the previous years. At the same time, states' support for higher education, as measured by two-year percentage gains remained at a high level (over 25%) for the top group of states and was significantly higher (4.8% increase) for the bottom group in FY1990, than in the previous years.

### Additional Considerations

There were moderately strong gains in state support for higher education in FY1990. One explanation for this may have to do with the priorities which states assign to higher education vis-a-vis other areas. As indicated in the NCSL survey, higher education was identified by legislative fiscal officers as the highest priority issue in four states: Idaho, Minnesota, North Dakota, and Washington. Utilizing Grapevine data, three of those states had two-year percentage increases which were above the weighted national average of 14%, and Idaho was at the national average. Higher education, however, did not fare as well when elementary-secondary education was listed as the top priority which occurred in nine states. In these nine states, higher education support was in the bottom half of state rankings in two-year percentage gains. In six of the nine states where legislative fiscal officers identified corrections as a leading fiscal issue, state appropriations for higher education were in the bottom half as measured by two-year percentage gains.

Taxation has been cited as a key issue in a state's ability to provide greater support to higher education. The NCSL survey identified 12 states where taxation was identified as a leading issue. In nine of those 12 states, higher education fared relatively well with the nine states ranking in the top half in two-year percentage gains for higher education. Only in Arkansas, New York, and Wisconsin was taxation rated as a leading issue, and these states were in the lowest quartile of two-year percentage gains for higher education. The revenue from additional taxes may be critical in increases in state support for higher education.

Two additional factors emerge in an analysis of the reasons for a substantial increase in state support for higher education this year. They include support for student financial aid and state support for community colleges. In 37 of the 50 states student finance aid was reported as a separate element to Grapevine. In these states, there was a 30% two-year gain for student aid, an amount which was more than twice the national weighted average of 14%. States have made strong efforts to increase funds going to student aid during a period when student tuition levels have been increasing rapidly. In state support to community colleges, there were 40 states reporting separate amounts for community colleges. In this grouping of states, there was a 17% two-year gain in appropriations to community colleges. Community colleges, in a number of instances, have taken the lead in establishing partnerships with business in job training and in technical training. These areas are related to economic development and would appear to have been a sound investment in attracting increased state support. Caution is needed in interpreting these findings, because these data are not designed to segment specific areas with operating budgets, such as student aid and community college support. It does appear that states, however, are responding to identified concerns and needs in both areas.

### Comparative Higher Education Finance Measures

Comparative higher education finance measures are used widely by researchers and analysts in making comparisons among states in effort for higher education. Two of the more commonly used such measures are appropriations per capita and per \$1,000 of personal income. These two measures are displayed on the following page.

For 15 years, these measures were published by The Chronicle of Higher Education, along with the state tax appropriations data which appear in monthly issues of Grapevine. Beginning in 1987, these measures were no longer published in the Chronicle. They appear in a mid-winter issue of Grapevine, as well as being included in this volume.

Caution must be exercised in utilizing and interpreting these two comparative measures, because they use only state tax appropriations as a single revenue source. While state tax appropriations are the largest revenue source in the public sector and are an important revenue source in the private sector, a more complete analysis needs to incorporate more sources of revenue. These would include local taxes, student tuition, and non-tax sources.

Nonetheless, with the approval of the Grapevine Advisory Committee and with this cautionary note, these measures are included as a service to readers.

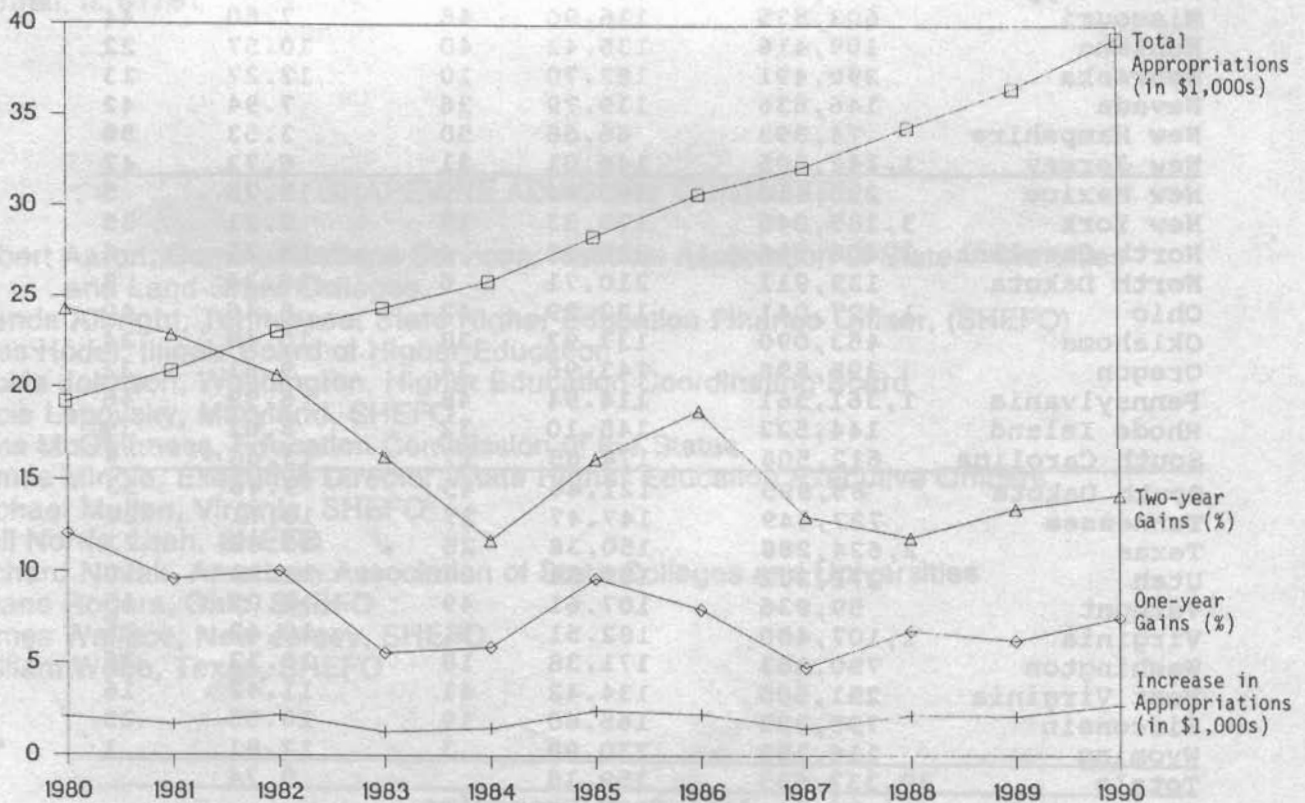


Figure 1. State Higher Education Support during the 1980s.



RANKINGS OF THE STATES ON APPROPRIATIONS OF STATE TAX FUNDS  
FOR OPERATING EXPENSES OF HIGHER EDUCATION,  
PER CAPITA AND PER \$1,000 PERSONAL INCOME, FISCAL YEAR 1989-90

States	Higher Ed Appropriations		Appropriations Per Capita		Appropriations Per \$1,000	
	(\$1,000s)		(\$)	Rank	(\$)	Rank
(1)	(2)		(4)	(4)	(5)	(6)
Alabama	776,640		187.14	8	14.73	8
Alaska	176,023		311.55	1	17.59	2
Arizona	569,982		156.20	22	10.91	18
Arkansas	301,201		124.77	44	10.29	27
California	5,740,737		200.68	7	10.81	19
Colorado	504,757		148.76	26	9.29	34
Connecticut	463,796		142.40	35	6.22	49
Delaware	115,541		175.59	16	9.91	28
Florida	1,567,712		125.07	43	7.66	43
Georgia	884,669		135.60	39	9.14	38
Hawaii	292,456		260.89	2	15.90	4
Idaho	158,247		156.22	21	12.46	12
Illinois	1,675,322		144.44	33	8.21	41
Indiana	814,021		146.88	30	9.82	29
Iowa	502,293		180.68	12	12.09	14
Kansas	444,788		178.99	14	11.31	17
Kentucky	550,182		147.03	28	11.51	15
Louisiana	522,912		115.95	47	9.65	31
Maine	176,868		147.02	29	9.71	30
Maryland	823,348		176.49	15	9.14	37
Massachusetts	815,998		139.18	37	6.66	48
Michigan	1,408,009		151.95	24	9.21	36
Minnesota	946,779		220.28	5	13.19	11
Mississippi	432,971		161.56	20	14.87	7
Missouri	603,535		116.90	46	7.60	44
Montana	109,416		135.42	40	10.57	22
Nebraska	290,491		182.70	10	12.27	13
Nevada	146,636		139.79	36	7.94	42
New Hampshire	74,393		66.66	50	3.53	50
New Jersey	1,142,805		146.01	31	6.73	47
New Mexico	296,410		185.84	9	15.75	5
New York	3,185,045		179.33	13	9.21	35
North Carolina	1,458,516		220.92	4	15.71	6
North Dakota	139,911		210.71	6	16.34	3
Ohio	1,427,041		132.29	42	8.46	40
Oklahoma	453,090		137.93	38	10.49	24
Oregon	395,898		143.96	34	9.61	32
Pennsylvania	1,361,361		114.94	48	6.99	46
Rhode Island	144,522		145.10	32	8.62	39
South Carolina	612,508		174.65	17	13.66	9
South Dakota	85,995		121.46	45	9.46	33
Tennessee	727,449		147.47	27	10.71	20
Texas	2,624,288		150.38	25	10.68	21
Utah	272,201		155.54	23	13.21	10
Vermont	59,936		107.61	49	7.03	45
Virginia	1,107,480		182.51	11	10.42	25
Washington	790,383		171.38	18	10.32	26
West Virginia	251,505		134.42	41	11.42	16
Wisconsin	795,383		165.60	19	10.55	23
Wyoming	116,183		230.98	3	17.81	1
Totals	39,337,633		159.18		9.74	

Sources: Appropriations data from Grapevine.  
Population from Census Bureau, estimate of total population, July 1, 1989, as reported in "Almanac," Chronicle of Higher Education, September 6, 1989.  
Personal income from Survey of Current Business, August 1989.



## Acknowledgments

The contributions of many individuals go into the production of these summary documents and Grapevine each month. The producers of state tax appropriations data include a network of "correspondents" in the 50 states, and their willing and consistent efforts provide a solid foundation for Grapevine.

The Advisory Committee, formed in 1984, includes those persons whose names appear below. The Advisory Committee meets annually during the In-Service Education Program of the State Higher Education Finance Officers. These experts have provided invaluable technical and policy advice which has enabled Grapevine to maintain its original purpose of providing timely data while being improved significantly in accuracy in recent years.

This volume is the 29th consecutive annual report published by the Office of Communications Services at the National Association of State Universities and Land-Grant Colleges. Their continued interest and assistance are appreciated very much.

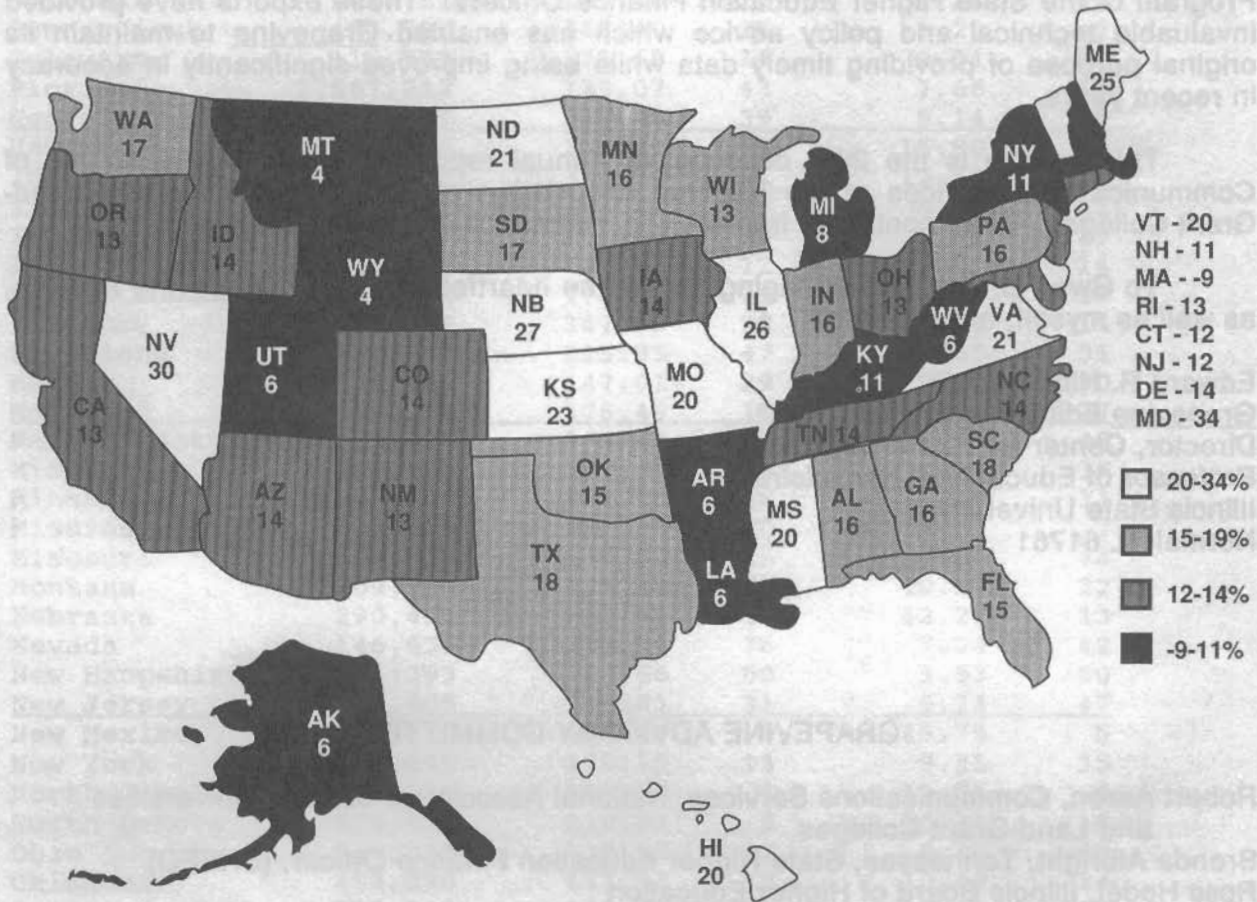
To Gwen B. Pruyne, Managing Editor, the heartfelt thanks of Grapevine readers, as well as myself, are extended.

Edward R. Hines, Ph.D.  
Grapevine Editor  
Director, Center for Higher Education  
Professor of Educational Administration  
Illinois State University  
Normal, IL 61761

### GRAPEVINE ADVISORY COMMITTEE

Robert Aaron, Communications Services, National Association of State Universities and Land-Grant Colleges  
Brenda Albright, Tennessee, State Higher Education Finance Officer, (SHEFO)  
Ross Hodel, Illinois Board of Higher Education  
Jackie Johnson, Washington, Higher Education Coordinating Board  
Lucie Lapovsky, Maryland, SHEFO  
Aims McGuinness, Education Commission of the States  
James Mingle, Executive Director, State Higher Education Executive Officers  
Michael Mullen, Virginia, SHEFO  
Gail Norris, Utah, SHEFO  
Richard Novak, American Association of State Colleges and Universities  
Duane Rogers, Ohio, SHEFO  
James Wallace, New Jersey, SHEFO  
William Webb, Texas, SHEFO

PERCENTAGES OF TWO-YEAR GAIN IN APPROPRIATIONS OF STATE TAX FUNDS FOR ANNUAL OPERATING EXPENSES OF HIGHER EDUCATION IN THE FIFTY STATES, FY1990 OVER FY1988



Map by Graphics, Media Services, Illinois State University



APPROPRIATIONS OF STATE TAX FUNDS FOR OPERATING EXPENSES OF  
HIGHER EDUCATION FOR FISCAL YEARS 1979-80, 1987-88, AND 1989-90,  
WITH PERCENTAGES OF GAIN OVER THE MOST RECENT TWO AND TEN YEARS.  
(In thousands of dollars)

States	Year 1979-80	Year 1987-88	Year 1989-90	2-yr gain Percent	10-yr gain Percent
(1)	(2)	(3)	(4)	(5)	(6)
Alabama	344,683	669,992	776,641	16	125
Alaska	95,906	165,542	176,023	6	84
Arizona	232,707	498,036	569,982	14	145
Arkansas	169,664	284,333	301,200	6	78
California	2,814,321	5,071,271	5,740,737	13	104
Colorado	246,866	441,070	504,757	14	104
Connecticut	226,371	414,174	463,796	12	105
Delaware	53,273	101,339	115,541	14	117
Florida	650,334	1,367,174	1,567,712	15	141
Georgia	385,132	759,404	884,669	16	130
Hawaii	124,359	243,118	292,456	20	135
Idaho	85,028	139,136	158,247	14	86
Illinois	931,489	1,331,777	1,675,322	26	80
Indiana	398,997	704,703	814,021	16	104
Iowa	282,114	441,458	502,293	14	78
Kansas	238,839	361,178	444,788	23	86
Kentucky	299,918	494,949	550,182	11	83
Louisiana	330,008	494,507	522,912	6	58
Maine	57,336	141,412	176,868	25	208
Maryland	323,732	614,605	823,348	34	154
Massachusetts	314,929	894,998	815,998	- 9	159
Michigan	808,320	1,303,202	1,408,009	8	74
Minnesota	477,731	815,663	946,779	16	98
Mississippi	233,834	360,036	432,971	20	85
Missouri	314,807	503,019	603,535	20	92
Montana	60,494	105,106	109,416	4	81
Nebraska	150,940	227,974	290,491	27	92
Nevada	56,896	112,551	146,636	30	158
New Hampshire	29,806	66,901	74,393	11	150
New Jersey	477,891	1,016,773	1,142,805	12	139
New Mexico	138,624	262,813	296,410	13	114
New York	1,543,416	2,874,893	3,185,045	11	106
North Carolina	580,190	1,284,076	1,458,516	14	151
North Dakota	61,822	115,723	139,911	21	126
Ohio	669,197	1,265,213	1,427,041	13	113
Oklahoma	228,827	394,404	453,090	15	98
Oregon	229,013	349,940	395,898	13	73
Pennsylvania	742,415	1,173,572	1,361,361	16	83
Rhode Island	71,725	127,759	144,522	13	101
South Carolina	320,412	521,016	612,508	18	91
South Dakota	52,251	73,732	85,995	17	65
Tennessee	335,612	636,322	727,449	14	117
Texas	1,315,525	2,231,785	2,624,288	18	99
Utah	138,787	257,218	272,201	6	96
Vermont	27,062	49,990	59,936	20	121
Virginia	444,054	915,836	1,107,480	21	149
Washington	310,133	673,972	790,383	17	155
West Virginia	158,119	237,404	251,505	6	59
Wisconsin	468,618	705,430	795,383	13	70
Wyoming	51,664	111,583	116,183	4	125
Totals	19,104,191	34,408,082	39,337,633		
Weighted average percentages of gain				14	106



### WHAT THE FIGURES ARE INTENDED TO MEAN

The ground rules used to achieve an approach to uniformity of reporting are enumerated below. Diversities of practices among the 50 states make it impossible to eliminate all inconsistencies and to accomplish absolute comparability among states and among institutions. We emphasize that comparisons are of limited usefulness but have value if correctly interpreted.

1. Report only appropriations; not actual expenditures.
2. Report only sums appropriated for annual operating expenses.
3. For the state tax appropriations in complex universities, set out separately the sums appropriated for (or allocated to) the main campuses, branch campuses, and medical centers (even if on the main campus). The medical center item should include operation of colleges of medicine, dentistry, pharmacy, nursing, and teaching hospitals, either lumped as one sum or set out separately as preferred.
4. Include:
  - o sums appropriated for state aid to local public community colleges and for operation of state-supported community colleges, and for vocational-technical two-year colleges or institutes which are predominantly for high school graduates and adult students.
  - o sums appropriated to statewide coordinating boards or governing boards, either for board expenses or for allocation by the board to other institutions or both.
  - o sums appropriated for state scholarships or other student financial aids.
  - o sums destined for higher education, but appropriated to some other state agency. Examples: funds intended for faculty fringe benefits may be appropriated to the State Treasurer and disbursed by that office; certain funds for medical and health education may be appropriated to the state department of health and disbursed from that department. Sometimes these sums have to be estimated because the exact amount disbursed cannot be known until after the end of the fiscal period.
  - o appropriations directed to private institutions of higher education at all levels.
5. Exclude:
  - o appropriations for capital outlays and debt service.
  - o appropriations of sums derived from federal sources, student fees, auxiliary enterprises, and other non-tax sources.

ALABAMA

State tax-fund appropriations (in thousands of dollars) for the operating expenses of higher education for fiscal years 1988-89 and 1989-90 in Alabama.

Institutions (1)	Sums appropriated	
	1988-89 (2)	1989-90 (3)
University of Alabama		
Tuscaloosa	88,000	86,706
Birmingham	60,933	63,320
School of medicine	48,840	49,189
School of dentistry	9,991	10,062
School of optometry	4,748	4,782
University hospitals	21,990	22,862
Subtotal, U of A, B,	146,502	150,215
Huntsville	22,510	24,776
First professional health	5,162	4,535
Subtotal, U of A, H	27,672	29,311
Mental health transfer	4,212	4,212
Subtotal, U of A,	266,386	270,444
Auburn University System		
Auburn U, Main Campus	83,123	81,534
Veterinary medicine	10,846	11,661
Veterinary clinic	322	292
Coop ext, retirement	38,878	39,444
Subtotal, AU-mc,	133,169	132,931
Montgomery campus	14,244	13,716
Subtotal, AU,	147,413	146,647
U of South Alabama	31,246	30,816
College of Medicine	17,208	16,685
Univ hosp, clinics, program	6,633	8,057
Subtotal, USA,	55,087	55,558
Troy State U System		
TSU, Main Campus	16,216	15,640
TSU, Montgomery	2,781	3,092
TSU, Dothan-Ft Rucker	2,620	2,782
Subtotal, TSU	21,617	21,514
Jacksonville State U	21,525	21,570
Alabama A&M U	20,030	20,311
Alabama State U	19,435	19,343
U of North Alabama	15,954	15,862
U of Montevallo	11,479	11,393
Livingston U	6,832	6,816
Athens State College	3,971	4,006
Senior institutions	589,729	593,464
Junior Colleges	82,470	89,858
Voc-Tech schools	72,972	66,204
Postsec Ed Dept	3,065	3,962
Private Institutions	2,973	2,575
Pvt school student grants	3,038	3,488
Marine environment consortium	1,056	1,122
Commission on Higher Ed	1,548	1,800
Student aid program	4,286	4,459
Other statewide	9,503	5,312
Dept of Veterans Affairs	4,705	4,009
Other		388
Total	775,345	776,641

ALASKA

State tax-fund appropriations (in thousands of dollars) for the operating expenses of higher education for fiscal years 1987-88 and 1988-89 in Alaska.

Institutions (1)	Sums appropriated	
	1987-88 (2)	1988-89 (3)
University of Alaska		
Fairbanks	49,417	49,705
Rural College	3,463	5,431
Rural College/Chukchi	941	921
Rural College/Kuskokwim	2,810	2,745
Rural College/Northwest	1,119	1,070
Rural College/Rural Ed	1,974	
Organized research	10,751	11,612
Sch Fisheries-Ocean Sci	4,533	4,644
Coop extension	3,446	3,316
Subtotal, U of A, F	78,454	79,444
Anchorage	36,251	37,413
Kenai Peninsula College	2,174	2,253
Kodiak College	1,420	1,443
Matanuska-Susitna College	1,712	1,716
Prince William Sound Comm	1,359	1,529
Ctr Internat'l Business	600	595
Organized research	1,675	1,470
Mines & Petroleum		75
Subtotal, U of A, A	45,191	46,494
Southeast		
Juneau	8,138	8,570
Sitka	1,072	1,268
Ketchikan	1,024	1,062
Subtotal, U of A, S	10,234	10,900
Statewide programs & services		
Vocational-Technical ed	8,915	9,234
Networks	6,047	6,014
Other services	5,386	6,764
Subtotal, st-wide	20,348	22,012
Subtotal, U of A	154,227	158,850
WICHE	1,234	1,160
Student financial aid	7,000	10,000
Postsecondary Education Comm	4,353	6,013
Total	166,814	176,023

ARIZONA

State tax-fund appropriations (in thousands of dollars) for the operating expenses of higher education for fiscal years 1988-89 and 1989-90 in Arizona.

Institutions (1)	Sums appropriated	
	1988-89 (2)	1989-90 (3)
University of Arizona	186,099	189,265
College of medicine	41,057	43,213
Subtotal, U of A,	227,156	232,478
Arizona State U, Tempe	167,002	175,977
West campus	10,918	14,255
Subtotal, ASU,	177,920	190,232
Northern Arizona University	60,731	63,139
Board of Regents and WICHE	5,285	5,584
Subtotal, State U's,	471,092	491,433
State aid to comm colls	75,204	78,549
Total	546,296	569,982



ARKANSAS

State tax-fund appropriations (in thousands of dollars) for the operating expenses of higher education for fiscal years 1988-89 and 1989-90 in Arkansas.

Institutions (1)	Sums appropriated	
	1988-89 (2)	1989-90 (3)
U of Arkansas System		
Fayetteville campus	60,288	58,601
Medical sciences	49,698	48,327
Ag experiment stations	14,684	13,973
Coop extension service	14,649	13,866
Archeological survey	841	792
Little Rock campus	29,444	28,864
Pine Bluff campus	11,816	11,449
Monticello campus	6,871	6,645
System administration	1,620	1,506
Subtotal, U of A	189,911	184,023
Arkansas State U	27,452	26,605
Beebe branch	2,990	2,924
Subtotal, ASU	30,442	29,529
Southern Arkansas U	8,365	8,113
El Dorado branch	1,419	1,273
Technical branch	3,401	3,308
Subtotal, SAU	13,185	12,694
U of Central Arkansas	22,036	21,219
Arkansas Tech U	12,028	11,742
Henderson State U	9,760	9,402
Community Colleges	23,393	22,618
So Regional Education Boards	80	100
Dental & vet aid	1,425	1,460
Other dental, vet, optometry	753	704
Chiroprac, podiatry aid		
State scholarship aid (SSIG)	3,520	3,514
Dependents & survivors	46	60
Other state scholarships	907	867
Other appropriations	3,309	3,268
Total	310,795	301,200

CALIFORNIA

State tax-fund appropriations (in thousands of dollars) for the operating expenses of higher education for fiscal years 1988-89 and 1989-90 in California.

Institutions (1)	Sums appropriated	
	1988-89 (2)	1989-90 (3)
University of California		
Los Angeles	437,305	458,919
Berkeley	348,587	364,076
Davis	318,072	339,466
San Diego	198,222	209,711
Irvine	152,635	164,700
San Francisco	151,017	159,078
Santa Barbara	138,383	146,407
Riverside	111,958	120,824
Santa Cruz	79,445	85,913
System administration	38,998	40,401
Subtotal, U of C,	1,974,622	2,089,495
California State University	1,824,357	1,987,492
Hastings College of Law	12,051	13,272
California Maritime Academy	6,386	6,642
Community Colleges	1,450,025	1,480,082
Student Aid Commission	130,127	160,370
Postsecondary Education Comm	3,443	3,384
Total	5,401,011	5,740,737

COLORADO

State tax-fund appropriations (in thousands of dollars) for the operating expenses of higher education for fiscal years 1988-89 and 1989-90 in Colorado.

Institutions (1)	Sums appropriated	
	1988-89 (2)	1989-90 (3)
University of Colorado*	84,060	139,863
Health Sciences Center**	89,932	43,870
Subtotal, U of C	173,992	183,733
State Board of Agriculture***	72,706	77,312
Ag experiment station	7,225	7,296
Ag extension service	6,672	7,022
Veterinary medicine & hosp	5,404	5,655
Forest service	2,694	2,928
Subtotal, St Bd of Ag	94,701	100,213
Consortium of State Colleges†	45,825	48,297
U of Northern Colorado	27,139	28,617
Colorado School of Mines	11,140	10,672
St Brd Comm Colls & Occup Ed		
State Community Colleges	52,052	57,016
State aid, district jr col	12,621	13,921
Occupational education	25,993	26,911
Subtotal, SPCCOE	90,666	97,848
Auraria Higher Ed Center††		
Council on Arts and Humanities	1,108	1,309
State Historical Society	1,594	1,556
Colorado Advanced Tech Inst	2,243	2,516
Commission on Higher Education	1,433	910
Student aid	24,364	28,222
Vet and Ntl Guard tuition	374	364
Other	602	500
Subtotal, CCHE,	26,773	29,996
Total	475,181	504,757

\*Appropriated to the Board of Regents for allocation to the campuses at Boulder, Denver, and Colorado Springs.

\*\*Starting in FY1989-90, the appropriations to the Health Sciences Center are for the medically indigent. Of the total, \$43.3 million, only \$14.3 million is for the Health Sciences Center; the rest is for other hospitals that provide care for the medically indigent.

\*\*\*The State Board of Agriculture governs the U of Southern Colorado, Ft. Lewis Colleges, and Colorado State U.

†Includes: Mesa College, Metropolitan State College, Western State College, and Adams State College.

††Funded by transfers from the Regents of the U of Colorado, Consortium of State Colleges, and the State Community Colleges.



## CONNECTICUT

State tax-fund appropriations (in thousands of dollars) for the operating expenses of higher education for fiscal years 1988-89 and 1989-90 in Connecticut.

Institutions (1)	Sums appropriated	
	1988-89 (2)	1989-90 (3)
University of Connecticut	135,523	134,607
Health center	60,294	59,055
Subtotal, U of C,	195,817	193,662
State Universities -		
Central	31,530	31,314
Southern	31,497	30,607
Western	16,321	15,755
Eastern	13,512	13,283
Central office	2,115	2,912
Subtotal, S U's,	94,975	93,871
CNVR Higher Education Center	3,114	3,376
Regional community colleges	61,246	61,860
State technical colleges	18,054	17,996
Dept of Higher Education	4,086	4,067
Payment to others	21,674	21,095
Brd for State Academic Awards	650	632
New Eng Brd of Higher Ed	227	245
Museum of Nat Hist	209	*
Fringe benefits (est)	76,793	66,992
Total	476,845	463,796

\*In FY1990, the Museum of National History was absorbed by the University of Connecticut

## DELAWARE

State tax-fund appropriations (in thousands of dollars) for the operating expenses of higher education for fiscal years 1988-89 and 1989-90 in Delaware.

Institutions (1)	Sums appropriated	
	1988-89 (2)	1989-90 (3)
University of Delaware*	58,514	61,951
Scholarships & aid	3,962	4,126
State geologist**	755	1,065
Sea grant	355	373
Subtotal, U of D,	63,586	67,515
Delaware State College***	16,241	17,461
Institute of Med Ed & Research	1,709	1,707
Institute of Veterinary Med Ed	147	166
Institute of Dental Ed & Research	94	94
Technical & Comm Colleges****	24,149	26,756
Postsecondary Ed Commission	1,589	1,842
Total	107,515	115,541

For FY1990: (In \$1,000s)

*Includes "one time funds"	213
**Includes "one time funds"	203
***Includes "one time funds"	150
****Includes "one time funds"	79

## FLORIDA

State tax-fund appropriations (in thousands of dollars) for the operating expenses of higher education for fiscal years 1988-89 and 1989-90 in Florida.

Institutions (1)	Sums appropriated	
	1988-89 (2)	1989-90 (3)
State University System		
University of Florida	170,944	181,766
Health center	82,341	86,226
Inst of Food & Ag Science	87,694	93,253
Subtotal, U of F	340,979	361,245
University of South Florida	117,304	127,015
Medical center	45,112	45,182
Subtotal, U of SF	162,416	172,197
Florida State University	129,850	138,602
Florida International U	67,489	72,788
U of Central Florida	60,138	65,419
Florida Atlantic U	49,252	52,199
Florida A&M University	41,016	43,240
U of West Florida	29,893	31,875
U of North Florida	24,047	26,444
System reserve	3,321	4,724
Board of Regents	6,837	7,310
SREB	547	562
Challenge grants	8,100	
Comm hospital ed prog*	6,427	7,697
U of Miami med school*	13,176	12,395
SE Coll Osteopathic Med*	1,788	2,050
SECOM rural unmet needs*	105	105
Educ Prog, Teaching Hosp	10,000	10,000
Radon Research		400
Subtotal, BoR	46,980	40,519
Subtotal, St U Sys	955,381	1,009,252
Student Assistance Grants	33,899	39,793
Postsecondary Ed Plan Comm	598	740
Private Institutions**		
University of Miami	2,759	2,851
Barry University	244	486
Florida Inst Tech	622	617
Mt. Sinai Radiologic Tech	90	79
Bethune-Cookman	540	629
Edward Waters Upgrade	250	250
Nova University		1,310
FL Southern, Elem Educ		88
Tuition asst, pvt insts	16,673	16,673
Other Assistance	381	916
Subtotal, Pvt Insts	21,559	23,899
State aid to community coll	458,410	490,999
State Board of Comm Coll	2,498	3,029
Subtotal, C C's	460,908	494,028
Total	1,472,345	1,567,712

\*Programs in private institutions, assigned to the Board of Regents.

\*\*Provides for a variety of specialized programs in medically-related professions, sciences, engineering, social work, and others

GEORGIA

State tax-fund appropriations (in thousands of dollars) for the operating expenses of higher education for fiscal years 1988-89 and 1989-90 in Georgia.

Institutions (1)	Sums appropriated	
	1988-89 (2)	1989-90 (3)
University of Georgia	170,365	184,138
Ag Experiment Station	32,397	33,863
Coop Extension Service	31,328	33,112
Veterinary Med Exper Station	2,834	2,953
Skidway Inst of Oceanography	1,471	1,518
Marine Extension Service	1,146	1,192
Marine Institute	897	931
Vet Med Teaching Hospital	466	502
Minority Business Enterprise	334	347
Athens/Tifton Veterinary Labs	57	62
<b>Subtotal, U of G,</b>	<b>241,295</b>	<b>258,618</b>
Medical College of Georgia	62,628	66,227
Talmadge Memorial Hospital	31,398	28,311
Family Practice Residency	5,546	5,767
Desegregation program	369	378
<b>Subtotal, MC of G,</b>	<b>99,941</b>	<b>100,683</b>
Georgia Institute of Tech	70,770	79,912
Georgia Tech Research Inst	9,856	10,712
Education Extension Service	585	837
Advanced Technology Devel Ctr	1,235	1,435
Agricultural Research	987	1,320
Center for Rehabilitation	887	926
<b>Subtotal, GIT,</b>	<b>84,320</b>	<b>95,142</b>
Georgia State University	84,727	90,095
Senior Colleges -		
Georgia Southern College	26,640	31,126
Valdosta State College	18,103	19,961
West Georgia College	17,987	19,447
Kennesaw College	16,635	18,635
Columbus College	13,566	14,123
Georgia College	12,125	13,398
Southern College of Tech	12,253	13,152
Fort Valley State College	11,311	11,649
Augusta College	10,206	11,347
Albany State College	10,389	10,895
Savannah State College	10,409	10,889
Armstrong State College	8,783	9,484
Georgia Southwestern Coll	8,324	8,657
North Georgia College	7,297	7,867
Clayton State College	7,371	7,863
<b>Subtotal, S C's,</b>	<b>191,399</b>	<b>208,493</b>
Junior Colleges -		
DeKalb College	11,689	20,557
Abraham Baldwin Ag College	6,740	6,908
Middle Georgia College	5,492	5,593
Macon College	5,543	6,533
Darton College	4,738	5,064
Gainesville College	4,280	4,859
South Georgia College	4,285	4,275
Floyd College	3,744	4,092
Dalton College	3,615	3,961
Brunswick College	3,633	3,811
Atlanta Metropolitan Coll	3,667	3,758
Gordon College	3,383	3,697
Bainbridge College	2,285	2,354
Waycross College	1,754	1,852
East Georgia College	1,605	1,653
<b>Subtotal, J C's,</b>	<b>66,453</b>	<b>78,967</b>
Regents of University System	5,032	5,319
Information Technology		3,235
SREB payments	12,215	12,521
Repairs/rehabilitation fund	20,305	21,573
Medical scholarships	729	840
Regents opportunity grants	600	600
Regents scholarships	200	200
<b>Subtotal, R of US,</b>	<b>39,081</b>	<b>44,288</b>
Unallocated reserve	5,083	8,383
<b>Total</b>	<b>812,299</b>	<b>884,669</b>

HAWAII

State tax-fund appropriations (in thousands of dollars) for the operating expenses of higher education for fiscal years 1988-89 and 1989-90 in Hawaii.

Institutions (1)	Sums appropriated	
	1988-89 (2)	1989-90 (3)
University of Hawaii		
U of Hawaii, Manoa	138,289	149,899
School of medicine	11,467	12,086
School of nursing	2,232	2,600
Ag experiment station	8,909	9,412
Coop extension service	4,445	4,920
<b>Subtotal, U of H, M,</b>	<b>165,342</b>	<b>178,917</b>
University of Hawaii, Hilo	16,775	19,659
West Oahu College	1,120	1,658
Community Colleges	49,526	59,050
Systemwide support	18,161	18,155
<b>Subtotal, U of H,</b>	<b>250,924</b>	<b>277,439</b>
WICHE	971	1,017
Fringe benefits (est)	35,000	36,000
Less tuition/other revenue	- 21,000	- 22,000
<b>Total</b>	<b>265,895</b>	<b>292,456</b>

IDAHO

State tax-fund appropriations (in thousands of dollars) for the operating expenses of higher education for fiscal years 1988-89 and 1989-90 in Idaho.

Institutions (1)	Sums appropriated	
	1988-89 (2)	1989-90 (3)
University of Idaho	42,973	44,930
Ag research & coop ext	11,964	13,367
WAMI medical education	1,841	1,893
WOI veterinary medicine	942	860
Forestry research	119	251
Geological survey	417	446
<b>Subtotal, U of I,</b>	<b>58,256</b>	<b>61,747</b>
Boise State University	30,206	33,447
Idaho State University*	26,905	28,841
Lewis-Clark State College	4,821	5,327
Unallocated	1,400	2,000
Junior College support	6,407	6,988
Vocational education	15,375	16,875
State Board of Education	641	998
Scholarships and grants	362	1,396
Medical education	614	628
<b>Total</b>	<b>144,987</b>	<b>158,247</b>
*Includes for dental education	305	274



## ILLINOIS

State tax-fund appropriations (in thousands of dollars) for the operating expenses of higher education for fiscal years 1988-89 and 1989-90 in Illinois.

Institutions (1)	Sums appropriated	
	1988-89 (2)	1989-90 (3)
University of Illinois		
Urbana/Champaign	233,879	271,619
Chicago	216,000	271,077
Central administration	41,742	43,269
Subtotal, U of I,	491,621	585,965
Southern Illinois U		
Carbondale	111,990	129,273
Edwardsville	48,460	53,951
System office	1,864	2,146
Subtotal, SIU,	162,314	185,370
Board of Regents		
Northern Illinois U	77,845	90,185
Illinois State U	58,069	67,943
Sangamon State U	15,528	17,549
Board office	1,122	1,379
Subtotal, BoR	152,564	177,056
Board of Governors		
Western Illinois U	40,017	46,380
Eastern Illinois U	32,602	38,054
Northeastern Illinois U	28,859	32,902
Chicago State U	22,934	27,318
Governors State U	16,403	19,344
Board Office	1,657	1,960
Subtotal, BoG	142,472	165,958
Community College System	206,150	235,677
Board office	1,266	1,437
Subtotal, CC's	207,416	237,114
IL Student Assistance Commission*		
Scholarships and grants	158,601	191,877
Savings/Loan Program		5,000
Administration	2,423	2,959
Subtotal, ISAC,	161,024	199,836
Board of Higher Education	1,915	2,174
Grant programs**	35,550	47,770
Subtotal, BoHE	37,465	49,944
Vets/MIA depend scholarship	409	433
Special retirement contrib	1,047	11,238
Health, life insurance (est)	45,841	52,671
Worker & unemployment ins	4,014	3,904
Civil service merit	825	946
Tech trans & innovation grant	2,534	4,250
Small business dev centers	663	637
Total	1,410,209	1,675,322

\*Formerly the Illinois State Scholarship Commission.

\*\*Includes

Grants to private insts	13,305	16,900
Health education grants	17,543	19,486
Institutional grant program	4,702	11,384

## INDIANA

State tax-fund appropriations (in thousands of dollars) for the operating expenses of higher education for fiscal years 1988-89 and 1989-90 in Indiana.

Institutions (1)	Sums appropriated	
	1988-89 (2)	1989-90 (3)
Indiana University		
Bloomington	131,011	140,557
IUPUI-Indianapolis*	49,356	51,488
Health Division	53,621	71,747
Medical education		
Statewide system	11,542	**
Planning	2,365	**
Family Practice	1,000	1,334
Intern-residency program	1,334	1,000
Regional campuses		
Northwest	10,100	10,735
South Bend	9,508	11,321
Southeast	6,939	8,354
Kokomo	4,399	5,828
East	1,984	2,746
Higher ed telecommunications	5,010	5,120
Developmental Training Center	1,786	1,970
Chemical test training	656	504
Blood treatment prog	88	
Optometry education	2	29
Ft Wayne, 2nd yr med sch***		325
Nat'l inst fitness		200
Subtotal, IU	290,701	313,258
Purdue University		
West Lafayette	156,342	166,810
IUPU-Fort Wayne+	18,011	19,764
Regional campuses		
Calumet	14,765	15,952
North Central	4,660	5,079
Statewide Technology Programs	3,857	3,630
Coop extension service	3,219	3,371
Animal disease diag lab	2,105	2,228
Ag experiment station	1,484	2,554
County computer terminals	100	++
Crop production research ctr	50	52
Valparaiso nursing	78	81
Subtotal, PU	204,671	219,521
Ball State U	83,064	90,669
Indiana State U	57,229	60,216
U of Southern Indiana	9,538	11,999
Vincennes U+++	17,640	20,031
Indiana Voc Tech Coll	46,527	50,730
Commission for Higher Education	1,046	1,180
Coll placement assessment ctr	400	768
Student Assistance Commission	38,789	42,868
Program start-up fund	2,000	500
Endowment for Excellence	1,250	
Univ-based business assist	1,159	1,221
Library Automation	1,600	1,060
Total	755,614	814,021

\*Acronym for Indiana U-Purdue U at Indianapolis, which includes medicine, law and other professions as well as academic programs of Purdue.

\*\*Beginning in FY1990, transferred to IUPUI-Health Division.

\*\*\*Special funding for FY1990 and FY1991; may be transferred to IUPUI-Health Division in FY1992.

+Dual campus of Indiana U and Purdue U; one of these universities is designated fiscal agent.

++Beginning in FY1990, transferred to Purdue U.

+++A two-year community colleges now largely supported by the state, but partly by the county where it is located.

IOWA

State tax-fund appropriations (in thousands of dollars) for the operating expenses of higher education for fiscal years 1988-89 and 1989-90 in Iowa.

Institutions (1)	Sums appropriated	
	1988-89 (2)	1989-90 (3)
University of Iowa	148,790	153,842
Psychiatric hospital	6,272	6,272
Hospital school	4,777	4,859
Oakdale campus	2,582	2,702
Family practice med train	1,596	1,602
Subtotal, U of I,	164,017	169,277
Iowa State University	121,287	125,154
Ag & home ec exper station	14,530	16,674
Coop extension service	14,368	14,486
Fire service education	389	410
Livestock research	300	300
Subtotal, ISU,	150,874	157,024
University of Northern Iowa	48,208	49,597
Board of Regents	565	1,051
Subtotal, Regents programs	363,664	376,949
Area Colleges	82,122	88,458
College Aid Commission	288	303
Pvt coll tuition grants**	28,895	30,683
University of Osteopathy**	715	800
State scholarships	750	800
Voc-tech tuition grants	644	750
Science & math student grants	450	
GSL repayment	85	500
Work study	2,650	3,000
Minority grant		50
Subtotal, CAC,	34,477	37,086
Total	480,263	502,293

\*Includes a portion for the current fiscal year and a portion for the following fiscal year.  
\*\*Support for private institutions only.

KANSAS

State tax-fund appropriations (in thousands of dollars) for the operating expenses of higher education for fiscal years 1988-89 and 1989-90 in Kansas

Institutions (1)	Sums appropriated	
	1988-89 (2)	1989-90 (3)
University of Kansas	90,277	102,843
Medical center	49,232	64,449
Subtotal, U of K,	139,509	167,292
Kansas State University	92,839	101,409
Veterinary medical center	6,560	7,569
Subtotal, KSU,	99,399	108,978
Wichita State University	42,377	47,316
Pittsburg State University	19,058	21,458
Fort Hays State University	18,470	20,525
Emporia State University	18,158	20,225
Kansas Technical Institute	3,560	3,744
Board of Regents*	7,113	8,523
Subtotal, Regents System,	347,644	398,061
Aid to Washburn University	4,706	5,949
Aid to community colleges	35,619	40,778
Total	387,969	444,788

\*Includes student assistance 5,836 6,684

KENTUCKY

State tax-fund appropriations (in thousands of dollars) for the operating expenses of higher education for fiscal years 1988-89 and 1989-90 in Kentucky.

Institutions (1)	Sums appropriated	
	1988-89 (2)	1989-90 (3)
University of Kentucky	130,282	136,980
Medical Center	53,024	56,624
Community Colleges	38,701	42,409
Subtotal, U of K,	222,007	236,013
University of Louisville	57,446	110,771
Medical Center	46,997	
Subtotal, U of L,	104,443	110,771
Eastern Kentucky U	41,696	44,495
Western Kentucky U	40,925	43,934
Murray State U	31,053	32,784
Morehead State U	25,095	26,808
Northern Kentucky U	21,505	22,572
Kentucky State U	13,944	14,627
Ky Higher Ed Assist Authority	12,802	12,802
Council on Higher Ed	5,213	5,376
Total	518,683	550,182

LOUISIANA

State tax-fund appropriations (in thousands of dollars) for the operating expenses of higher education for fiscal years 1988-89 and 1989-90 in Louisiana.

Institutions (1)	Sums appropriated	
	1988-89 (2)	1989-90 (3)
LA State University System		
Baton Rouge	80,406	87,427
Medical center	101,618	111,651
Ctr for Ag Sci & Rural Dev	41,789	44,415
Veterinary medicine	11,860	11,562
Law center	3,797	4,045
New Orleans campus	25,814	27,963
Shreveport campus	6,978	7,562
Alexandria campus	3,496	3,881
Eunice campus	2,572	2,792
System Board		1,394
Subtotal, LSU,	278,330	302,692
Board of Trustees System		
Univ of Southwestern LA	32,993	35,996
Louisiana Tech U	22,880	24,476
Northeast LA U	22,317	23,311
Southeastern LA U	15,836	16,683
McNeese State U	15,215	16,229
Northwestern State U	14,148	14,638
Nicholls State U	14,399	15,212
Grambling State U	16,160	16,303
Delgado Comm College	10,156	10,769
System Board		675
Subtotal, Bd of T,	164,104	174,292
Southern University System		
Baton Rouge	27,066	29,927
New Orleans	7,859	8,238
Shreveport	2,700	3,697
System Board		741
Subtotal, SUS,	37,625	42,603
LA U Marine Consortium	1,413	1,405
Board of Regents	1,411	1,920
Total	482,883	522,912



**MAINE**

State tax-fund appropriations (in thousands of dollars) for the operating expenses of higher education for fiscal years 1988-89 and 1989-90 in Maine.

Institutions (1)	Sums appropriated	
	1988-89 (2)	1989-90 (3)
University of Maine*	129,250	140,589
Public broadcasting network	1,845	2,214
Subtotal, U of M	131,095	142,803
Vocational education**	21,420	24,043
Maine Maritime Academy	5,308	6,557
Grant/loan/scholarships***	1,402	1,500
Incentive scholarships****	1,317	1,965
Other scholarships	1,940	*****
Total	162,482	176,868

\*Includes all campuses.

\*\*Includes six institutes and other vocational programs.

\*\*\*Includes funds to secure positions in health related fields for Maine students at various schools in the Northeast.

\*\*\*\*For students attending either public or private institutions.

\*\*\*\*\*Balance carried forward from previous years; no new funds were appropriated.

**MARYLAND**

State tax-fund appropriations (in thousands of dollars) for the operating expenses of higher education for fiscal years 1988-89 and 1989-90 in Maryland.

Institutions (1)	Sums appropriated	
	1988-89 (2)	1989-90 (3)
University of Maryland		
College Park	191,988	224,453
Baltimore City	102,748	121,151
Towson State University	40,196	50,020
Baltimore County	39,703	46,337
Frostburg State College	17,582	19,433
Salisbury State College	16,414	18,978
University of Baltimore	14,507	18,315
Eastern Shore	13,223	14,978
Bowie State College	13,405	14,401
Coppin State College	12,273	13,619
University College	1,500	3,829
Ag experiment station	11,203	13,515
Coop extension service	13,865	16,595
Ctr, environ & estuarine	7,107	8,513
Biotech & sea grant	5,811	8,080
System administration	15,033	16,498
Subtotal, U of M,	516,558	608,715
Morgan State University	26,731	32,412
St. Mary's Coll of Maryland	7,875	8,918
State scholarship board	16,133	20,086
Commission for Higher Ed	7,337	10,131
Aid to private higher ed	20,043	24,150
Aid to community colleges	105,114	118,005
State Board for Comm Colls	807	931
Subtotal, CC's	105,921	118,936
Total	700,598	823,348

Note: The organization of this tabulation reflects the restructuring of higher education which became effective in July 1988.

**MASSACHUSETTS**

State tax-fund appropriations (in thousands of dollars) for the operating expenses of higher education for fiscal years 1988-89 and 1989-90 in Massachusetts.

Institutions (1)	Sums appropriated	
	1988-89 (2)	1989-90 (3)
University of Massachusetts		
Amherst	172,868	163,601
Boston	64,033	60,892
Worcester	31,773	30,036
President's office	748	375
Subtotal, U of M,	269,422	254,904
University of Lowell	56,770	53,588
Southeastern Mass Univ	33,989	33,720
State Colleges		
Salem	22,988	21,884
Bridgewater	21,906	20,764
Fitchburg	18,399	17,445
Westfield	14,729	13,979
Worcester	14,746	13,962
Framingham	14,647	13,800
North Adams	10,130	9,588
Mass College of Art	9,727	9,202
Mass Maritime	8,988	8,480
Subtotal, S C's,	136,260	129,104
Community Colleges		
Springfield	15,341	14,630
North Shore	14,187	13,516
Massasoit	13,990	13,287
Middlesex	12,466	11,987
Northern Essex	12,192	11,553
Bunker Hill	11,111	10,493
Holyoke	10,963	10,390
Roxbury	9,282	8,800
Bristol	9,064	8,553
Quinsigamond	8,496	8,049
Berkshire	7,597	7,189
Mass Bay	7,484	7,075
Cape Cod	7,164	6,789
Mt Wachusett	6,992	6,627
Greenfield	6,139	5,827
Subtotal, C C's,	152,469	144,765
Fringe benefits	108,466	99,560
Collective bargaining	4,715	4,354
Board of Regents	4,074	3,578
Scholarships	84,090	80,160
Other	18,169	12,265
Total	868,426	815,998

MICHIGAN

State tax-fund appropriations (in thousands of dollars) for the operating expenses of higher education for fiscal years 1988-89 and 1989-90 in Michigan.

Institutions (1)	Sums appropriated	
	1988-89 (2)	1989-90 (3)
University of Michigan		
Ann Arbor	242,530	253,374
Dearborn	15,672	16,588
Flint	14,254	15,209
Subtotal, U of M,	272,456	285,171
Michigan State University	204,060	213,628
Ag experiment station	20,114	21,030
Coop extension service	18,001	18,975
Subtotal, MSU,	242,175	253,632
Wayne State University	165,799	174,039
Western Michigan University	74,788	78,138
Eastern Michigan University	56,633	59,176
Central Michigan University	50,367	54,572
Ferris State College	36,178	37,807
Michigan Tech University	35,796	37,402
Northern Michigan University	34,600	36,179
Oakland University	32,301	33,788
Grand Valley State College	24,265	26,018
Saginaw Valley College	14,150	15,414
Lake Superior State College	9,366	9,801
Upper Peninsula Health Project	569	628
Supportive Services	2,082	1,553
Other	225	3,303
Subtotal, U's & C's	1,051,750	1,106,620
Scholarships and Grants -		
Competitive scholarships	25,654	26,424
Private Tuition grants	44,563	46,746
Private Dental grants	3,554	3,660
Private General degree	3,980	4,206
Private Allied health	609	659
Indian tuition	1,182	1,218
Michigan Work-study	5,536	5,807
Part-time students	2,005	2,103
Robert C. Byrd Scholarship	500	500
Congress teachers scholars	750	750
Ed Opportunity Grants	1,019	1,050
Other	20	225
Subtotal, S & G,	89,372	93,348
Aid to community colleges	205,361	212,490
Less Federal Funds	-4,450	-4,450
Total	1,342,033	1,408,009

MINNESOTA

State tax-fund appropriations (in thousands of dollars) for the operating expenses of higher education for fiscal years 1988-89 and 1989-90 in Minnesota.

Institutions (1)	Sums appropriated	
	1988-89 (2)	1989-90 (3)
University of Minnesota*	327,081	355,025
Special appropriations	75,663	82,166
LCMR + Ag bill	3,030	2,762
Subtotal, U of M	405,774	439,953
State University System**	147,354	167,400
Community College System***	75,788	88,147
Area Voc-Tech Institutes†	154,832	166,652
Higher Education Coordinating Board		
Scholarships and grants	63,250	69,044
Tuition reciprocity	4,300	4,300
Work study	4,679	5,304
Income contingent loans	158	
MINITEX library	759	1,045
Other	3,659	3,900
Subtotal, HECE	76,805	83,593
Mayo Medical school++	909	1,034
Totals	861,462	946,779

(Continued in the next column)

MINNESOTA (Continued from preceding column)

\*Includes campuses at Minneapolis-St. Paul, Duluth, and Morris; two-year technical colleges at Crookston and Waseca; as well as medical, agricultural and other programs.  
 \*\*Includes the campuses at Mankato, St. Cloud, Moorhead, Bemidji and Southwest and Metropolitan Universities.  
 \*\*\*Includes 13 state-operated institutions.  
 +Includes 33 state-funded, locally operated post-secondary institutions.  
 ++Private institution.

MISSISSIPPI

State tax-fund appropriations (in thousands of dollars) for the operating expenses of higher education for fiscal years 1988-89 and 1989-90 in Mississippi

Institutions (1)	Sums appropriated	
	1988-89 (2)	1989-90 (3)
U of Mississippi	37,576	39,347
Medical Center	69,178	64,861
Pharmaceutical research	1,541	1,542
Off campus centers	370	296
Mineral resources institute	386	386
Law research institute	312	322
Subtotal, U of M	109,363	106,754
Mississippi State U	46,502	48,439
Ag & forest exper station	16,318	16,520
Coop extension	15,137	15,542
Coll of veterinary med	7,604	7,638
State chemical lab	1,172	1,218
Forest products lab	2,422	2,428
Off campus centers	1,016	1,102
Water resources institute	137	136
Subtotal, MSU	90,308	93,023
U of Southern Mississippi	43,271	43,372
Off campus centers	2,571	2,910
Gulf Coast Research Lab	2,967	3,020
Subtotal, U of SM	48,809	49,302
Jackson State U	20,310	19,584
Delta State U	11,377	12,345
Alcorn State U	9,349	9,015
Miss U for Women	7,210	7,166
Miss Valley State U	7,048	7,598
Vocational education	45,620	47,455
Community Junior Colleges	68,400	72,696
Board for Comm Colls	261	264
Universities Research Center	2,498	2,746
Education & Research Ctr	1,067	1,082
Board of Trustees	1,510	1,542
Universities Center	364	215
Student financial aid	2,177	2,184
Totals	425,671	432,971



MISSOURI

State tax-fund appropriations (in thousands of dollars) for the operating expenses of higher education for fiscal years 1988-89 and 1989-90 in Missouri.

Institutions	Sums appropriated	
	1988-89	1989-90
(1)	(2)	(3)
U of Missouri System*	287,015	310,457
State Universities and Colleges		
Southwest	44,948	51,000
Central	33,793	37,828
Southeast	29,254	31,203
Northeast	25,308	26,821
Northwest	16,991	18,592
Southern	11,726	12,738
Western	11,690	12,679
Lincoln	9,626	10,176
Harris-Stowe	4,579	4,876
Subtotal, U & C's,	187,915	205,913
Aid to public jr colleges	62,463	67,176
Grant program & other aid	10,267	15,300
Coord Board for Higher Ed	4,095	4,689
Total	551,755	603,535

\*Includes all campuses, administration and other system-wide appropriations as well as appropriations for medicine, dentistry, nursing, optometry and pharmacy at Columbia, Kansas City and St. Louis.

MONTANA

State tax-fund appropriations (in thousands of dollars) for the operating expenses of higher education for fiscal years 1988-89 and 1989-90 in Montana.

Institutions	Sums appropriated	
	1988-89	1989-90
(1)	(2)	(3)
University of Montana	27,037	27,499
Forestry experiment station	645	664
Subtotal, U of M,	27,682	28,163
Montana State University	32,780	34,243
Ag experiment station	6,257	6,735
Coop extension service	2,534	2,335
Subtotal, MSU,	41,571	43,313
Coll of Mineral Science & Tech	6,422	7,010
Bureau of Mines	1,234	1,293
Subtotal, CMST,	7,656	8,303
Eastern Montana College	10,142	10,715
Northern Montana College	6,382	6,585
Western Montana College	3,461	3,655
Board of Regents	28	32
Commissioner's Office	784	847
Student assistance*	4,529	4,595
Community college assistance	3,042	3,208
Vocational-technical centers**		8,156
Total	105,277	117,572

\*Includes (in thousands of dollars):  
 WICHE student assistance 1,587 1,664  
 WICHE dues 62 65  
 WAMI student assistance 1,992 2,058  
 Minnesota dental 69 94  
 SSIG 210 220  
 NDSL 55 55  
 State work-study 276 392  
 SEOG 47

\*\*For FY1990: Effective July 1, 1989, the five vocational-technical centers became state agencies under the control of the State Board of Regents. Because comparable figures for former year are unavailable, the sum for this year was not included when percentages of gain were calculated.

NEBRASKA

State tax-fund appropriations (in thousands of dollars) for the operating expenses of higher education for fiscal years 1988-89 and 1989-90 in Nebraska.

Institutions	Sums appropriated	
	1988-89	1989-90
(1)	(2)	(3)
University of Nebraska		
Lincoln	93,515	119,222
Medical center	49,069	58,260
Omaha	24,515	31,720
System office	30,977	15,729
Subtotal, U of N,	198,076	224,931
State Colleges -		
Kearney	13,170	16,997
Wayne	6,595	7,950
Chadron	6,286	7,436
Peru	3,450	4,118
System office	1,745	356
Subtotal, S C's,	31,246	36,857
Technical Community Colleges	23,127	27,000
Coordinating Commission	982	1,703
Total	253,431	290,491

NEVADA

State tax-fund appropriations (in thousands of dollars) for the operating expenses of higher education for fiscal years 1988-89 and 1989-90 in Nevada.

Institutions	Sums appropriated	
	1988-89	1989-90
(1)	(2)	(3)
U of Nevada, Reno	34,773	39,287
School of medicine	7,578	8,380
Ag experiment station	3,401	3,551
Coop extension service	2,985	3,079
Intercollegiate athletics	960	995
Statewide programs	3,013	3,199
Subtotal, U of N, R	52,710	58,491
U of Nevada, Las Vegas	34,095	40,351
Statewide programs	405	411
Intercollegiate athletics	942	995
Subtotal, U of N, LV	35,442	41,757
Community College Division		
Clark County	10,160	12,691
Truckee Meadows	7,334	8,246
Western Nevada	3,839	4,828
Northern Nevada	2,189	2,521
Subtotal, C C's	23,522	28,286
Business Center North	960	1,022
Business Center South	820	858
System computing center	4,821	5,089
Desert Research Institute	1,345	1,588
University Press	263	297
National Direct Student Loan	30	30
System administration	1,336	1,510
Salary Adjustment		6,340
Merit Increases		1,368
Total	121,249	146,636

## NEW HAMPSHIRE

State tax-fund appropriations (in thousands of dollars) for the operating expenses of higher education for fiscal years 1988-89 and 1989-90 in New Hampshire.

Institutions (1)	Sums appropriated	
	1988-89 (2)	1989-90 (3)
U of New Hampshire, Durham	31,757	33,311
Ag experiment station	1,735	1,804
Coop extension	1,111	1,155
Extension work, counties	372	387
Consulting center	163	121
Marine research & develop	619	644
New Hampshire Network	1,689	1,766
Subtotal, UNH, Durham	37,446	39,188
U of New Hamp, Manchester	951	1,062
Subtotal, U of NH	38,397	40,250
Plymouth State College	7,445	7,654
Keene State College	7,054	6,711
School of Lifelong Learning	785	744
Subtotal, UNH System	53,681	55,359
Postsecondary Ed Commission	281	271
Incentive program	525	525
Veterinary medicine schools	279	219
Optometry school	45	45
Med school, Dartmouth	336	200
New England Bd of Higher Ed	78	83
Nursing scholarships	49	50
Governor's Merit scholarship	125	
Nurses leveraged grants		50
War orphans scholarships	10	10
Leveraged incentive grant	400	400
Out/state incentive grant	100	75
Subtotal, PSEC	2,228	1,928
Postsecondary ed admin/support	983	1,089
New Hamp Technical Institute	4,990	5,057
Vocational-Technical Colleges		
Manchester	2,398	2,420
Claremont	1,796	1,835
Berlin	1,837	1,907
Nashua	1,841	1,871
Stratham	1,422	1,566
Laconia	1,278	1,361
Subtotal, TT's	15,562	16,017
Total	72,454	74,393

## NEW JERSEY

State tax-fund appropriations (in thousands of dollars) for the operating expenses of higher education for fiscal years 1988-89 and 1989-90 in New Jersey.

Institutions (1)	Sums appropriated	
	1988-89 (2)	1989-90 (3)
Rutgers, State U of NJ	239,831	238,575
Ag experiment station	20,403	20,222
Subtotal, Rutgers	260,234	258,797
U of Medical & Dental of NJ	166,379	168,197
NJ Institute of Technology	42,553	42,629
State Colleges		
Montclair	38,646	39,551
Paterson	33,760	33,321
Trenton	31,500	32,190
Kean	31,158	30,708
Glassboro	30,185	29,778
Jersey City	28,032	27,674
Stockton	17,631	17,431
Ramapo	16,031	16,594
Thomas Edison	3,376	3,764
Subtotal, S C's	230,319	231,011
Health related programs		
Private dental school aid	4,734	3,551
School of nursing aid	1,238	833
Vet med ed program	1,454	1,427
Optometric education	360	236
Graduate med education	382	126
Institute of Medical Research	790	790
Subtotal, HR	8,958	6,963
Other support programs		
Technology and computers	6,375	3,602
Humanities/foreign language	3,500	2,710
Scholarly Chairs	675	675
Special student populations	1,133	1,234
Other academic support	2,900	2,610
Urban/minority programs	4,752	3,860
Excellence grants	12,700	7,732
System support	898	573
Subtotal, other	32,933	22,996
Student aid	92,851	98,746
Chancellor's office, admin	5,645	4,497
Fringe benefits (est)	163,749	193,153
Aid to county colleges	98,843	92,011
Aid to private Univ & Coll	24,290	23,805
Total	1,126,754	1,142,805



## NEW MEXICO

State tax-fund appropriations (in thousands of dollars) for the operating expenses of higher education for fiscal years 1988-89 and 1989-90 in New Mexico.

Institutions (1)	Sums appropriated	
	1988-89 (2)	1989-90 (3)
University of New Mexico	80,267	87,038
Medical school	19,300	21,576
Cancer center	1,516	1,564
Medical-related programs	7,695	6,051
State medical investigator*	1,719	1,769
Research centers	1,025	
Gallup branch	2,187	2,388
Los Alamos branch	949	925
Valencia branch	1,147	1,145
Subtotal, U of NM	115,805	122,456
New Mexico State U	50,498	55,313
Ag experiment station	6,345	7,042
Ag extension service	4,785	5,170
St Dept of Agriculture*	3,568	3,931
Research Center	1,355	393
Alamogordo branch	2,084	2,369
Carlsbad branch	1,363	1,520
Dona Ana branch	1,306	2,068
Grants branch	1,083	1,054
Subtotal, NMSU	72,387	78,860
Eastern New Mexico U	14,427	15,690
Roswell branch	3,501	3,427
Clovis branch	3,030	3,478
Subtotal, ENMU	20,958	22,595
NM Inst of Mining & Tech	10,541	10,831
State Bureau of Mines*	2,258	2,461
Research Center	1,683	1,101
Subtotal, NMIMT	14,482	14,393
NM Highlands U	9,822	10,546
Western New Mexico U	6,879	7,125
Community Colleges		
New Mexico Junior College	423	839
Northern New Mexico CC	3,305	3,775
Santa Fe Com Col	3,072	3,433
San Juan College	510	1,048
Subtotal, CC's	7,310	9,095
Vocational Technical Schools		
Albuquerque TV-I	13,984	15,178
Luna Area Vocational Sch	3,707	4,077
Tucumcari Area Voc'l Sch	1,076	1,191
Subtotal, Voc-tech	18,767	20,446
Commission on Higher Education	915	873
WICHE	64	64
State work-study	1,892	2,432
Student grants	4,534	4,925
Student loans	193	150
Student exchange grants	2,066	2,150
Student interns	148	
Employment training		300
Subtotal, CHE	9,812	10,894
Total	276,222	296,410

\*State function administered through the institution.

## NEW YORK

State tax-fund appropriations (in thousands of dollars) for the operating expenses of higher education for fiscal years 1988-89 and 1989-90 in New York

Institutions (1)	Sums appropriated	
	1988-89 (2)	1989-90 (3)
State University of New York (SUNY)		
University Centers		
Story Brook	282,604	317,092
Buffalo	187,072	207,912
Albany	84,082	95,945
Binghamton	61,057	69,746
Subtotal, U Ctrs	614,815	690,695
Medical Centers		
Downstate (NYC)	148,442	160,141
Upstate (Syracuse)	127,026	142,940
Subtotal, Med Ctrs	275,468	303,081
Colleges of Arts & Science		
Buffalo	43,018	47,957
Brockport	31,624	34,887
Oswego	31,158	34,457
New Paltz	28,356	31,308
Oneonta	25,744	28,505
Cortland	25,490	27,843
Plattsburgh	25,114	27,666
Geneseo	23,099	25,247
Fredonia	22,725	25,235
Potsdam	21,973	23,915
Purchase	19,974	22,341
Old Westbury	16,068	17,645
Subtotal, C of A&S	314,343	347,006
Statutory Colleges		
Land-Grant at Cornell	102,083	113,022
Ceramics at Alfred U	6,501	7,064
Subtotal, State Colls	108,584	120,086
Specialized Colleges		
Environment Sci & Forest	19,493	21,881
Empire State	16,029	17,965
Coll of Technology	11,802	13,538
Optometry	11,005	15,227
Maritime	9,165	10,030
Subtotal, Spec Colls	67,494	78,641
Agricultural & Technical Colleges		
Farmingdale	29,564	32,667
Alfred	17,999	19,933
Cobleskill	12,872	14,268
Morrisville	12,524	13,548
Delhi	12,365	13,354
Canton	10,613	11,434
Subtotal, A&T Colls	95,937	105,204
University-wide programs	151,381	115,174
Fringe benefits	280,946	315,273
Cornell land script	35	35
SUNY gross total	1,909,003	2,075,195
Less student fees, etc.	-422,588	-496,995
SUNY net tax fund total	1,486,415	1,578,200
Cornell coop & extension	2,986	3,161
Community Colleges		
SUNY	217,273	236,518
CUNY	91,982	97,203
Subtotal, CC's	309,255	333,721
Other Programs		
Aid to CUNY	608,415	637,844
Tuition assistance	411,600	395,500
Aid to independent colls	172,093	180,936
Scholar & fellowships	35,637	33,163
Higher ed services corp	10,649	11,191
Higher ed administration	7,488	8,223
Chairs, science-humanities	1,000	750
Aid to native Americans	385	385
Aid to academic libraries	1,971	1,971
Subtotal, other	1,249,238	1,269,963
Total	3,047,894	3,185,045

**NORTH CAROLINA**

State tax-fund appropriations (in thousands of dollars) for the operating expenses of higher education for fiscal years 1988-89 and 1989-90 in North Carolina.

Institutions (1)	Sums appropriated	
	1988-89 (2)	1989-90 (3)
University of North Carolina		
UNC at Chapel Hill	124,405	134,406
Health affairs	88,000	97,502
Area health education ctr	30,292	31,623
Subtotal, UNC-CH	242,697	263,531
NC Memorial Hospital*	28,751	34,660
NC State U at Raleigh	139,521	148,867
Sch of Veterinary Med	17,209	18,660
Ag research service	33,093	36,485
Ag extension service	26,555	28,812
Subtotal, NCSU,	216,378	232,824
East Carolina University**	110,179	119,065
UNC at Charlotte	48,027	55,154
UNC at Greensboro	49,795	54,583
Appalachian State Universit	49,179	52,174
NC Ag & Tech St Univ	32,779	35,656
Western Carolina University	31,412	33,993
UNC at Wilmington	27,842	31,353
NC Central University	25,301	26,385
Fayetteville State U	15,289	16,569
Winston-Salem State U	15,164	15,988
UNC at Asheville	13,891	15,340
Pembroke State University	13,503	15,223
Elizabeth City State U	12,383	14,538
NC School of the Arts	7,851	8,106
General administration	17,844	16,867
Allocation to institution	2,945	2,625
Related programs***	40,141	46,485
Subtotal, U of NC,	1,001,351	1,091,119
Comm Colls and Tech Insts	325,587	364,829
Ed benefits, veterans' children	2,668	2,568
<b>Total</b>	<b>1,329,606</b>	<b>1,458,516</b>

\*This is a teaching hospital, part of the medical complex at Chapel Hill, but administratively separate from the university at Chapel Hill. It is placed here for comparability with similar institutions in other states.

\*\*Includes for the school of medicine:  
FY1989: \$44,402,449 FY1990: \$48,773,122

\*\*\*Includes:  
1) aid to private institutions to be used for financial aid to needy NC graduates  
FY1989: \$9,504,000 FY1990: \$11,460,750  
2) tuition grant to each full-time NC undergraduate attending a private school  
FY1989: \$23,296,619 FY1990: \$25,739,300  
3) assistance to private medical schools and NC students attending them  
FY1989: \$2,554,000 FY1990: \$2,554,000.

**NORTH DAKOTA**

State tax-fund appropriations (in thousands of dollars) for the operating expenses of higher education for the unidivided biennia 1987-89 and 1989-91 in North Dakota.

Institutions (1)	Sums appropriated	
	1987-89 (2)	1989-91 (3)
U of North Dakota	56,058	69,793
Medical center	27,544	27,381
UND Williston*	1,796	2,595
UND Lake Region*	1,627	2,503
<b>Subtotal, U of ND</b>	<b>87,025</b>	<b>102,272</b>

(Continued in the next column)

**NORTH DAKOTA (Continued from preceding column)**

North Dakota State U	48,495	59,899
Ag experiment stations	23,122	26,626
Extension division	8,140	9,944
Bottineau branch	2,582	3,019
State forest service	925	1,313
<b>Subtotal, NDSU</b>	<b>83,264</b>	<b>100,761</b>
State College of Science	17,194	19,250
Minot State U	13,384	18,768
Dickinson State U	8,333	10,103
Valley City State U	7,020	8,268
Mayville State U	5,668	6,506
Bismarck St Coll (2-yr)*	5,299	7,328
<b>Subtotal, All Insts</b>	<b>227,187</b>	<b>273,256</b>
Board of Higher Education	1,262	1,681
Student financial assistance	1,375	2,751
Pool of funds	261	196
Telecommunications		700
Research EPSCOR	1,361	1,238
<b>Subtotal, BHE</b>	<b>4,259</b>	<b>6,566</b>
<b>Total</b>	<b>231,446</b>	<b>279,822</b>

\*Beginning with the 1985-87 Biennium, the community colleges became state institutions with separate appropriations.

Note: Totals are for the biennia. Half of each total is used in the 50-state summary table.

**OHIO**

State tax-fund appropriations (in thousands of dollars) for the operating expenses of higher education for fiscal years 1988-89 and 1989-90 in Ohio.

Institutions (1)	Sums appropriated	
	1988-89 (2)	1989-90 (3)
Ohio State University	241,963	259,902
Clinical teaching	15,588	16,468
Ag research center	19,542	21,714
Ag cooperative extension	11,453	14,353
<b>Subtotal, OSU</b>	<b>288,546</b>	<b>312,437</b>
University of Cincinnati	117,308	128,537
Clinical teaching	11,190	11,504
<b>Subtotal, U of C</b>	<b>128,498</b>	<b>140,041</b>
University of Akron	70,203	77,409
Ohio University	66,754	74,025
Kent State University	63,392	67,865
University of Toledo	58,940	63,481
Bowling Green State U	52,944	59,977
Wright State University	54,154	59,518
Cleveland State University	49,781	54,731
Miami University	44,748	50,188
Youngstown State University	38,776	41,403
Central State University	13,253	13,896
Shawnee State University	8,105	10,768
Medical College of Ohio	23,968	25,999
Northeastern Med College	11,471	12,090
Case Western Reserve*	5,767	5,641
Community Colleges	94,912	102,075
University branches	47,303	52,820
Technical colleges	62,058	68,322
Instructional grants	54,281	52,646
Board of Regents	2,948	3,218
Special projects	6,281	9,079
Academic scholarships	3,591	3,591
Selective excellence	38,146	30,006
STU choice grants**	16,256	20,083
Misc Health Education	15,732	15,732
<b>Total</b>	<b>1,320,808</b>	<b>1,427,041</b>

\*Subsidy to this private university for education in medicine and dentistry.

\*\*Provides aid to students attending in-state private institutions.



## OKLAHOMA

State tax-fund appropriations (in thousands of dollars) for the operating expenses of higher education for fiscal years 1988-89 and 1989-90 in Oklahoma.

Institutions	Sums appropriated	
	1988-89 (1)	1989-90 (2)
University of Oklahoma	66,367	71,442
Health sciences center	38,223	48,025
Tulsa medical branch	3,857	*
Family medicine practice	2,046	*
Law center	2,767	3,184
Geological survey	1,730	1,837
<b>Subtotal, U of O,</b>	<b>114,990</b>	<b>124,488</b>
Oklahoma State University	67,661	72,173
Ag experiment station	12,267	13,343
Ag extension division	12,113	12,824
Coll of veterinary medicine	6,585	6,984
Tech Branch-Okmulgee	9,291	9,558
Tech Branch-Oklahoma City	4,049	4,402
Coll Osteopathic Medicine	6,177	6,891
<b>Subtotal, OSU,</b>	<b>118,144</b>	<b>126,175</b>
Senior Universities -		
Central State U	21,549	23,645
Northeastern State U	15,094	17,225
Southwestern State U	11,730	12,912
Cameron U	10,009	10,902
East Central State U	8,957	9,739
Southeastern State U	8,827	9,549
Langston U	4,785	6,200
Northwestern State U	3,928	4,401
Oklahoma Panhandle State U	3,571	3,872
U of Science & Arts	3,391	3,868
<b>Subtotal, SU's,</b>	<b>91,841</b>	<b>102,313</b>
Junior Colleges -		
Tulsa Junior College	15,430	16,927
Rose State College	11,715	12,864
Oklahoma City Comm College	8,460	9,499
Northeastern OK A&M College	5,477	5,889
Rogers State College	3,686	4,938
Eastern OK State College	3,468	3,742
Northern Oklahoma College	2,906	3,165
Western OK State College	2,597	2,896
Carl Albert Junior College	2,580	2,801
Connors State College	2,450	3,174
Murray State College	2,536	2,708
Seminole Junior College	2,353	2,660
El Reno Junior College	1,923	2,226
<b>Subtotal, J C's,</b>	<b>65,583</b>	<b>73,489</b>
Other appropriations		
University Center at Tulsa	2,665	2,665
Ardmore Higher Ed Program	440	340
McCurain County Higher Ed	467	367
Televised Instruction Sys	825	825
Kerr Conference Center	188	188
Jane Brooks School-USAO	31	32
Fire service training	355	571
Civil rights compliance	817	687
Scholar-leadership program	220	220
Higher ed tuition aid	10,325	12,325
Teacher education assist	2,147	2,147
Chiropractic ed assistance	35	50
Student assistance program	90	
Prospect teachers scholarships	180	180
Dependent youth & orphans	12	12
Special programs	648	670
Willis Scholarship Trust	250	250
State Regents administration	2,598	
State Regents discretionary	1,340	2,267
OK Academic Scholarships	600	2,679
Enid Higher Education Program	150	150
Muskogee Branch	250	
<b>Subtotal, Other</b>	<b>24,634</b>	<b>26,625</b>
<b>Total</b>	<b>415,191</b>	<b>453,090</b>

\*FY1990, combined with Health Sciences Center.

## OREGON

State tax-fund appropriations (in thousands of dollars) for the operating expenses of higher education for fiscal years 1988-89 and 1989-90 in Oregon.

Institutions	Sums appropriated	
	1988-89 (1)	1989-90 (2)
University of Oregon	55,326	60,826
Oregon Health Sciences U	34,318	37,251
Teaching hospital & clinics	12,595	10,720
Crippled children's division	5,479	5,779
Dental clinics	260	280
<b>Subtotal, OHSU</b>	<b>52,652</b>	<b>54,030</b>
Oregon State University	64,505	69,421
Ag experiment station	14,677	16,610
Coop extension service	10,716	11,957
Forest research lab	1,573	1,733
<b>Subtotal, OSU</b>	<b>91,471</b>	<b>99,721</b>
Portland State University	36,167	40,052
Southern Oregon State College	12,923	14,192
Oregon Inst of Technology	10,970	12,483
Western Oregon State College	10,009	12,459
Eastern Oregon State College	7,687	8,603
Centralized activities	7,358	8,858
Ctr for Advanced Tech Education	693	1,321
Teaching Resources Division	246	258
NDGL Health Profess Student loan	50	97
WICHE	468	487
<b>Subtotal, SSHE</b>	<b>286,020</b>	<b>313,387</b>
Education Coord Commission	525	516
State Scholarship Comm	11,689	12,302
Community Colleges	62,954	69,693
<b>Total</b>	<b>361,188</b>	<b>395,898</b>

PENNSYLVANIA

State tax-fund appropriations (in thousands of dollars) for the operating expenses of higher education for fiscal years 1988-89 and 1989-90 in Pennsylvania.

Institutions (1)	Sums appropriated	
	1988-89 (2)	1989-90 (3)
<b>State-related Universities</b>		
Pennsylvania State U	203,459	235,591
Medical School	4,188	4,481
Subtotal, FSU	207,647	240,072
Temple University	115,781	125,418
Medical School	7,863	8,413
Subtotal, TU	123,644	133,831
University of Pittsburgh	106,706	124,795
Medical School	5,907	6,320
Subtotal, Pitt	112,613	131,115
Lincoln University	8,814	9,541
Subtotal, Commonwealth seg	452,718	514,559
<b>State System of Higher Education</b>		
Indiana	43,765	46,271
West Chester	31,890	34,955
Bloomsburg	23,688	25,621
Millersville	23,555	25,460
Slippery Rock	23,970	25,169
Kutztown	22,122	24,123
Edinboro	21,748	23,037
Clarion	21,658	22,960
Shippensburg	21,222	22,609
California	19,429	21,257
East Stroudsburg	17,347	18,568
Mansfield	13,199	13,827
Lock Haven	13,032	13,823
Cheyney	12,481	12,481
Chancellor's Office	1,536	1,667
Minority Recruitment		550
Deferred Maintenance		3,800
Subtotals, SSHE	319,594	345,281
Community Colleges (est)	95,641	92,589
Stevens State School of Tech	3,869	4,333
<b>Private, State-aided Institutions:</b>		
University of Pennsylvania	23,816	24,711
Medical School	4,295	4,596
School of Veterinary Med	7,481	8,005
Subtotal, U of P	35,592	37,312
Thomas Jefferson U	9,925	10,720
Drexel University	5,466	5,849
Phila Coll Osteopathic Med	5,240	5,607
Hahnemann Med College	5,571	6,061
Medical College of Penn	3,796	4,212
Penn College of Optometry	1,553	1,662
Penn Coll of Podiatric Med	1,191	1,269
The University of the Arts	1,047	1,120
Phila Coll of Tex & Science	522	559
Del Val Coll of Sci & Ag	438	624
Berean Training & Indust Sch	1,029	1,194
Johnson School of Technolog	195	209
Williamson Sch Mech Trades	97	76
Subtotal, Pvt, State-aided,	71,662	76,474

(Continued in the next column)

Pennsylvania (Continued from preceding column)

Other Higher Education Aid:		
Institutions (1)	1988-89 (2)	1989-90 (3)
Penn Higher Ed Scholarships	116,160	127,780
Institutional Assist Grants	24,043	26,447
Student Aid-Matching Grants	6,350	6,350
Equal Oppor Prof Education	750	750
Computer Training	2,769	2,880
Loan Forgiveness	1,000	2,049
Higher Ed for Disadvantaged		7,175
Equal Education Opportunity	6,899	
Ed at Correctional Insts	82	117
Deaf, Blind Students	50	50
Ethnic Heritage Studies	200	200
Higher Ed-Rural Initiatives	1,245	375
College of Physicians	100	100
Psychiatric Education	1,375	
Higher Education Equipment	14,100	6,602
General State Auth Rentals	3,813	
Interdepart Transfers (est)	146,510	147,250
Subtotal, other	325,446	328,125
Total	1,268,930	1,361,361

RHODE ISLAND

State tax-fund appropriations (in thousands of dollars) for the operating expenses of higher education for fiscal years 1988-89 and 1989-90 in Rhode Island.

Institutions (1)	Sums appropriated	
	1988-89 (2)	1989-90 (3)
University of Rhode Island	67,095	69,435
Rhode Island College	30,607	32,073
Community Coll of Rhode Islan	25,711	27,453
Subtotal, U & C's,	123,413	128,961
Office of Higher Education*	3,783	2,903
State scholarships	10,276	10,714
New England Higher Ed Compact	77	83
Reg plan--medical, dental		202
Support of medical education	1,520	1,568
Youth intern program	82	91
Total	139,151	144,522
*Includes funds for categorical programs to be distributed to the institutions (In \$1,000s)		
Program for Excellence	1,100	463
Challenge Fund	500	231
Governor's scholarship	500	231



**SOUTH CAROLINA**

State tax-fund appropriations (in thousands of dollars) for the operating expenses of higher education for fiscal years 1988-89 and 1989-90 in South Carolina.

Institutions (1)	Sums appropriated	
	1988-89 (2)	1989-90 (3)
U of So Carolina, Main Campus	113,702	117,954
Medical school, Main Campus	16,896	18,176
Spartanburg campus	7,952	9,247
Coastal campus	8,473	10,005
Aiken campus	5,884	7,096
Two-year campuses	8,273	9,333
<b>Subtotal, U of SC,</b>	<b>161,180</b>	<b>171,811</b>
Clemson University	68,021	73,968
Ag Research, Ext, Inspect	39,673	43,335
<b>Subtotal, CU,</b>	<b>107,694</b>	<b>117,303</b>
Medical Univ of So Carolina	72,352	76,346
Residency programs	14,301	14,543
Hospitals and clinics	15,695	17,304
<b>Subtotal, MUSC,</b>	<b>102,348</b>	<b>108,193</b>
College of Charleston	18,339	19,989
So Carolina State College	18,350	19,766
Winthrop College	18,718	19,504
The Citadel	13,151	13,441
Francis Marion College	10,953	12,532
Lander College	7,263	8,294
<b>Subtotal, S C's,</b>	<b>86,774</b>	<b>93,526</b>
Commission on Higher Ed	1,446	1,469
Scholarships, loans, SREB	1,630	1,103
Desegregation funds	1,295	1,195
Cutting Edge	5,000	5,000
<b>Subtotal, CHE,</b>	<b>9,371</b>	<b>8,767</b>
Grants private coll students	17,286	17,665
Tech & comprehensive com coll	92,836	95,243
<b>Total</b>	<b>577,489</b>	<b>612,508</b>

**SOUTH DAKOTA**

State tax-fund appropriations (in thousands of dollars) for the operating expenses of higher education for fiscal years 1988-89 and 1989-90 in South Dakota.

Institutions (1)	Sums appropriated	
	1988-89 (2)	1989-90 (3)
U of South Dakota	20,113	22,359
Medical school	6,405	6,884
<b>Subtotal U of SD</b>	<b>26,518</b>	<b>29,243</b>
South Dakota State U	24,365	26,426
Ag experiment station	4,792	5,155
Coop extension service	3,565	3,905
<b>Subtotal, SDSU</b>	<b>32,722</b>	<b>35,486</b>
SD School of Mines & Tech	7,804	8,394
Northern State College	7,347	8,102
Black Hills State College	5,542	5,918
Dakota State College	4,215	4,457
Commissioner's Office	775	832
Student loans & scholarship	479	494
Veterinary School contracts	94	41
Physicians residency prog	185	300
Utilities	2,145	2,474
Employer's investment in SD	1,960	662
HECS	543	560
Other	418	1,746
Postsecondary Vocational Educ	6,001	6,501
Less estimated tuition	- 18,172	- 19,215
<b>Total</b>	<b>78,576</b>	<b>85,995</b>

**TENNESSEE**

State tax-fund appropriations (in thousands of dollars) for the operating expenses of higher education for fiscal years 1988-89 and 1989-90 in Tennessee.

Institutions (1)	Sums appropriated	
	1988-89 (2)	1988-90 (3)
University of Tennessee		
Knoxville	117,664	123,695
Chattanooga	24,742	26,804
Martin	19,261	20,039
Space Institute	4,106	4,383
Medical Units:		
College of Medicine	25,885	27,504
Family Medicine	3,050	3,180
UT Memphis	38,061	40,593
Ag Experiment Station	13,927	15,036
Ag extension service	16,803	17,999
Coll of Veterinary Medicine	8,862	9,388
Municipal Tech Advisory	947	1,040
County Tech Advisory Service	673	750
Institute for Public Service	2,101	2,227
Statewide cont education	1,358	1,456
University-wide admin	2,032	2,093
<b>Subtotal, UT,</b>	<b>279,472</b>	<b>296,187</b>
Board of Regents System		
Board of Regents U's		
Memphis State U	72,167	75,942
East Tennessee State U*	48,418	53,166
Middle Tennessee State U	39,244	43,619
Tennessee Technological U	31,291	32,986
Tennessee State U	23,877	25,409
Austin Peay State U	15,879	16,902
<b>Subtotal, BRU</b>	<b>230,876</b>	<b>248,024</b>
Two-year Institutions		
State Tech at Memphis	12,445	13,210
Chattanooga	10,819	12,166
Shelby	9,363	10,154
Roane	7,928	9,018
Nashville State Tech	7,936	8,301
Walters	7,706	8,119
Volunteer	6,468	7,059
Pellissippi**	6,164	6,944
Cleveland	6,097	6,371
Jackson	5,684	6,015
Columbia	5,583	5,864
Motlow	4,537	4,943
Tri-Cities State Tech	3,945	4,189
Dyersburg	3,309	3,519
<b>Subtotal, Two-yr</b>	<b>97,984</b>	<b>105,872</b>
Area Voc Tech Schools	24,909	25,865
Bd of Regents, admin	2,391	2,576
<b>Subtotal, BofR System</b>	<b>356,160</b>	<b>382,337</b>
Higher Education Commission	1,319	1,656
Contract education***	2,308	2,347
Tenn Student Assistance Corp	12,367	13,298
Centers of Excellence	19,269	19,269
Vocational Improvements	1,800	955
Campus Centers of Emphasis	1,400	1,400
Instruction & Research Equip	10,000	10,000
<b>Total</b>	<b>684,595</b>	<b>727,449</b>

\*Includes: (\$1,000s)  
College of Medicine 13,643 14,713  
Family Practice 2,083 2,166

\*\*Formerly designated as the technical institute at Knoxville

\*\*\*Includes SREB and other programs administered by the Higher Education Commission.

Notes: For each of the fiscal years, sums were appropriated for Chairs of Excellence and Academic Scholarships, both of which are endowments, with the income going to the institutions. Also a portion of the funds previously appropriated to the contract education program are now appropriated directly to ETSU College of Medicine and UT, Memphis, for the Black Tennessean Scholarship Program.

TEXAS

State tax-fund appropriations (in thousands of dollars) for the operating expenses of higher education for fiscal years 1988-89 and 1989-90 in Texas.

Institutions (1)	Sums appropriated	
	1988-89 (2)	1989-90 (3)
U of Texas at Austin	180,707	193,252
UT at Arlington	52,630	58,677
UT at El Paso	29,969	33,926
UT Pan American U*	18,521	22,965
UT-PAU at Brownsville*	3,002	3,435
UT at Dallas	25,243	27,770
UT at San Antonio	24,062	28,229
UT at Tyler	7,954	8,839
UT at Permian Basin	6,358	6,708
UT Health Science Centers		
Houston	88,309	97,643
San Antonio	72,708	79,964
Dallas	58,840	65,778
Tyler	14,686	16,289
System Cancer Center	92,051	102,801
UT Medical, Galveston	164,167	177,860
System Administration		340
Subtotal, UT System	839,207	924,476
Texas A&M University	158,228	174,872
Ag experiment station	37,182	39,822
Ag extension service	31,647	34,398
Forest Service	8,381	9,303
Engineer exper station	5,304	6,599
Engineer exten service	2,757	3,259
Animal control service	2,202	2,346
Veterinary diag lab	1,889	3,342
Transportation inst	1,081	1,586
Prairie View A&M U	13,832	16,379
Tarleton State U	9,726	11,856
A&M U at Galveston	4,521	5,997
Texas A&I U**	13,123	16,028
Corpus Christi St U**	8,707	10,236
Laredo State U**	3,025	3,782
System administration	334	340
Subtotal, A&M System	301,939	340,145
University of Houston	91,922	100,555
Clear Lake	13,632	15,521
Downtown	9,517	10,332
Victoria	2,926	3,456
System administration		1,350
Subtotal, U of H	117,997	131,214
Texas Tech U	69,143	77,280
Health science ctr	39,177	42,740
Subtotal, TTU	108,320	120,020
U of North Texas	53,345	63,588
Texas Coll Osteopathy	21,036	24,331
Subtotal, NTSU	74,381	87,919
Texas State U System		
Southwest Texas St U	36,807	41,549
Sam Houston St U	21,833	25,133
Angelo State U	10,619	11,956
Sul Ross State U	6,347	6,026
Sul Ross State U-Uvalde		858
System administration	313	375
Subtotal, TSU System	75,919	85,897
Lamar University System		
Beaumont	24,154	26,764
Orange	1,898	2,387
Port Arthur	2,625	3,406
System administration		375
Subtotal, LU	28,677	32,932
East Texas State U	18,567	18,558
ETSU at Texarkana	3,061	3,312
Subtotal, ETSU	21,628	21,870

(Continued in the next column)

TEXAS (Continued from the preceding column)

Texas St Tech Inst	42,772	46,306
Texas Woman's U	28,236	31,074
Stephen Austin St U	24,744	27,254
Texas Southern U	19,324	23,854
West Texas St U	12,780	13,500
Midwestern State U	8,618	10,525
Fibers & Food Comm	1,393	1,450
National Research Lab		1,941
Rural medical ed board	38	
SREB	99	100
Higher Educ Fund***	45,500	45,500
State aid to comm colls	413,584	512,064
Coordinating Board		9,465
Equalization grants		21,279
Baylor med & dental		45,217
Family prac residency		7,820
Resident physician		4,199
Tech research		40,514
Advance Research		20,761
Incentive Grant		1,500
Remedial Ed		15,000
Other		492
Subtotal, CB	80,802	166,247
Total	2,245,958	2,624,288

\*Recently enacted legislation transferred the campuses of the former Pan American University system to the University of Texas.

\*\*Recently enacted legislation transferred the campuses of the former University of South Texas System to Texas A and M University.

\*\*\*Approximate amount to be used for equipment and library acquisitions.

UTAH

State tax-fund appropriations (in thousands of dollars) for the operating expenses of higher education for fiscal years 1988-89 and 1989-90 in Utah.

Institutions (1)	Sums appropriated	
	1988-89 (2)	1989-90 (3)
University of Utah	96,000	98,284
Medical programs	14,588	15,240
Research & public service	4,536	4,816
Subtotal, U of U	115,124	118,340
Utah State University	46,909	48,755
Agricultural programs	11,603	12,160
Research & public service	2,476	2,547
Subtotal, USU	60,988	63,462
Four Year Colleges		
Weber State College	30,916	31,588
Southern Utah State College	9,428	10,396
Subtotal, 4-yr	40,344	41,984
Two Year Colleges		
Snow College	5,285	5,683
Dixie College	5,642	6,076
College of Eastern Utah	4,779	5,350
Utah Tech Coll, Provo	11,575	12,423
Utah Tech Coll, Salt Lake	13,941	15,714
Subtotal, 2-yr	41,222	45,246
Bd of Regents & statewide		
Administration	1,332	1,393
Statewide programs	1,953	1,776
Subtotal, BoR & Statewide	3,285	3,169
Total	260,963	272,201



VERMONT

State tax-fund appropriations (in thousands of dollars) for the operating expenses of higher education for fiscal years 1988-89 and 1989-90 in Vermont.

Institutions (1)	Sums appropriated	
	1988-89 (2)	1989-90 (3)
University of Vermont	27,040	29,603
Educational TV	1,121	1,164
Morgan Horse Farm	12	12
Subtotal, U of V	28,173	30,780
State Colleges	14,028	15,971
Student assistance corp	11,487	13,066
Senatorial scholarships	60	
New England Higher Ed Compact	47	51
Higher Ed Planning Comm	30	37
Ed Commission of the States	30	31
Total	53,855	59,936

VIRGINIA

State tax-fund appropriations (in thousands of dollars) for the operating expenses of higher education for fiscal years 1988-89 and 1989-90 in Virginia.

Institutions (1)	Sums appropriated	
	1988-89 (2)	1989-90 (3)
University of Virginia	115,400	121,556
Hospital Division	38,259	40,837
Clinch Valley Coll	4,217	4,754
Subtotal, U of V	157,876	167,147
Va Poly Inst & State U	108,369	113,369
Extension Division	31,400	32,211
Research Division	28,047	30,635
Subtotal, VPI & SU	167,816	176,215
Va Commonwealth U	110,264	117,217
Health Sci, hospital	48,575	51,063
Subtotal, VCU	158,839	168,280
College of William & Mary	30,801	33,533
Richard Bland Coll	2,529	2,736
VIMS	10,005	10,832
Subtotal, CW&M	43,335	47,101
Other Colleges and Universities		
Old Dominion U	46,681	49,833
George Mason U	49,311	56,658
James Madison U	31,829	33,973
Norfolk State U	24,657	25,583
Radford U	24,763	27,212
Virginia State U	15,639	15,703
Mary Washington College	10,498	10,882
Longwood College	10,653	11,395
Virginia Military Inst	9,786	10,135
Christopher Newport College	8,894	9,799
Subtotal, C's & U's	232,711	251,173
Community Colleges	177,664	187,100
Student Aid*	18,236	20,157
State Council of Higher Educ	3,496	3,584
Scholarship Assist (CSAP)	4,302	4,302
Eminent scholars	4,835	5,600
Regional grants & contracts	527	527
Tuition Assist (TAGP)	18,770	19,485
Work Study Program**		2,000
Virginia Scholars Prog	536	600
Outstanding faculty program	65	65
Maintenance of excellence	1,229	1,229
Library services	304	137
Clinical faculty prog	145	100
Subtotal, SCHE	34,209	37,629

(Continued in the next column)

VIRGINIA (Continued from the preceding column)

Eastern VA Med Auth (EVMA)	10,130	10,954
Innov Tech Auth	12,165	13,280
SREB	100	100
Southeastern Univ Res Assoc	1,000	1,000
VCBA—equipment***	10,700	21,000
VA Inst of Sci Research	50	50
Equal opportunity plan	5,484	5,319
Marshall research ctr	110	200
Melchers/Monroe memorials	156	189
VA Foundation-humanities	586	586
Subtotal, Other	40,481	52,678
Total***	1,031,167	1,107,480
*Includes	(In \$1,000s)	
Dept of Health	100	100
Dept of Rehab Services	214	225
EVMA	35	35
**Available for the first time in FY1990, the program emphasizes off-campus public service jobs which relate to students' academic or career interests.		
***Total includes funds related to private institutions:	(In \$1,000s)	
Aid to students attending pvt or out-of-state schs	20,366	21,629
Non-state agencies	34,841	47,170
Totals	55,207	68,799

WASHINGTON

State tax-fund appropriations (in thousands of dollars) for the operating expenses of higher education for fiscal years 1988-89 and 1989-90 in Washington.

Institutions (1)	Sums appropriated	
	1988-89 (2)	1989-90 (3)
University of Washington	217,796	242,331
Washington State U	125,119	138,169
Western Washington U	36,302	39,326
Eastern Washington U	34,926	35,384
Central Washington U	29,538	30,489
Evergreen State College	17,088	18,993
Community Colleges	232,440	259,758
Higher Ed. Coordinating Brd	26,228	25,933
Total	719,437	790,383

WEST VIRGINIA

State tax-fund appropriations (in thousands of dollars) for the operating expenses of higher education for fiscal years 1988-89 and 1989-90 in West Virginia.

Institutions (1)	Sums appropriated	
	1988-89 (2)	1989-90 (3)
Board of Trustees System		
West Virginia University*	70,166	80,656
Medical center**	37,288	41,352
Medical residency	1,355	1,360
WVU at Parkersburg***	4,069	4,691
Coal & energy research	2,755	2,762
Doctoral research	25	25
Ag & forest exper stations	2,410	2,424
Subtotal, WVU,	118,068	133,270
Marshall University	24,776	28,824
Medical School	7,313	8,281
Subtotal, MU,	32,089	37,105
WV Coll of Graduate Studies	4,795	5,400
WV School of Osteopathic Med	4,441	4,984
Subtotal, B of T,	159,393	180,759
Board of Directors System		
Four-year Colleges		
Faimont State College	9,197	10,832
West VA Institute of Tech	8,099	9,140
West Virginia State College	7,927	9,015
West Liberty State College	6,755	7,656
Shepherd College	6,132	6,931
Concord College	5,416	6,100
Glenville State College	4,555	5,142
Bluefield State College***	4,379	4,932
Subtotal, 4-yr C's,	2,460	59,748
Community Colleges		
West Virginia Northern	3,379	3,892
Southern West Virginia	3,090	3,635
Subtotal, C C's,	6,469	7,527
Subtotal, B of D Sys	58,929	67,275
Other appropriations		
Eminent Scholars Program	150	150
Board of Regents	1,181	1,205
Higher Education Grant Prog	3,500	3,595
Tuition Contract Programs	665	681
Other unallocated	500	
Subtotal, other	5,996	5,631
Indirect fringe benefits (est)	28,600	****
Less lottery proceeds	+	- 2,160
Total	252,918	251,505

\*Includes Potomac State Colleges, a two-year branch.

\*\*Includes dedicated proceeds (In \$1,000s) from the soft drink tax 9,000 9,000

\*\*\*Formerly Parkersburg Community College.

\*\*\*\*Beginning in FY1990, fringe benefits are included in the institutional figures. This change distorts year-to-year comparisons for each institution, but does not affect the comparisons of totals for the state as a whole.

+For FY1990, a portion of the state's lottery proceeds are included in the institutional figures. GRAPEVINE excludes funds which are not derived from tax funds; therefore, the institutional figures and their respective percentages of gain are somewhat overstated for FY1990.

Note: The organization of this tabulation reflects the restructuring of higher education which became effective this year.

WISCONSIN

State tax-fund appropriations (in thousands of dollars) for the operating expenses of higher education for fiscal years 1988-89 and 1989-90 in Wisconsin.

Institutions (1)	Sums appropriated	
	1988-89 (2)	1989-90 (3)
University of Wisconsin System		
Doctoral Cluster		
Madison	236,310	250,424
University Hospitals	2,282	2,282
Subtotal, UW, Madison,	238,592	252,706
Milwaukee	76,016	82,026
Subtotal, doctoral,	314,608	334,732
University Centers		
Oshkosh	28,661	30,760
Eau Claire	27,701	30,269
Stevens Point	24,065	25,864
Whitewater	23,973	26,170
La Crosse	22,242	24,590
Stout	20,946	23,100
River Falls	16,205	17,655
Platteville	15,821	17,060
Parkside	15,026	15,699
Green Bay	13,420	14,654
Superior	8,927	9,615
Subtotal, U's,	216,987	235,436
Centers (2 year)	18,865	20,399
Extension	38,011	41,529
System Administration	7,970	8,529
Systemwide Programs	8,700	10,065
Subtotal, UW-system,	605,141	650,690
Voc. Tech. Adult Ed System	90,565	100,534
Medical College of Wisconsin	5,764	5,760
Higher Ed Aids Board	37,200	38,399
Total	738,670	795,383

WYOMING

State tax-fund appropriations (in thousands of dollars) for the operating expenses of higher education for the undivided biennia, 1986-88 and 1988-90 in Wyoming.

Institutions (1)	Sums appropriated	
	1986-88 (2)	1988-90 (3)
University of Wyoming	150,387	152,771
Community Colleges	65,607	73,713
Comm Coll Commission	351	414
Subtotal, CC	65,958	74,127
WICHE	4,410	4,161
Higher ed computer network	2,411	1,307
Total	223,166	232,366

Note: The totals above are for the undivided biennia. Half of each is used in the summary tables.